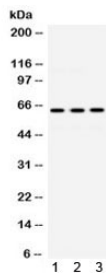


## EME1 Antibody (R32300)

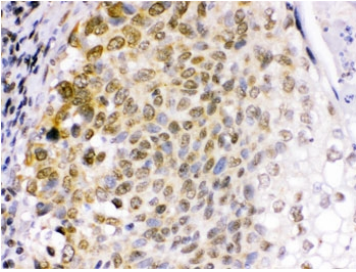
| Catalog No. | Formulation   | Size   |
|-------------|---|--------|
| R32300      | 0.5mg/ml if reconstituted with 0.2ml sterile DI water | 100 ug |

[Bulk quote request](#)

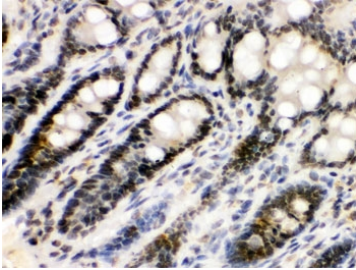
|                           |   |
|---------------------------|---|
| <b>Availability</b>       | 1-3 business days   |
| <b>Species Reactivity</b> | Human, Rat  |
| <b>Format</b>             | Antigen affinity purified   |
| <b>Host</b>               | Rabbit  |
| <b>Clonality</b>          | Polyclonal (rabbit origin)  |
| <b>Isotype</b>            | Rabbit IgG  |
| <b>Purity</b>             | Antigen affinity  |
| <b>Buffer</b>             | Lyophilized from 1X PBS with 2.5% BSA and 0.025% sodium azide   |
| <b>UniProt</b>            | Q96AY2  |
| <b>Localization</b>       | Nuclear   |
| <b>Applications</b>       | Western Blot : 0.1-0.5ug/ml<br>Immunohistochemistry (FFPE) : 0.5-1ug/ml<br>Flow Cytometry : 1-3ug/million cells |
| <b>Limitations</b>        | This EME1 antibody is available for research use only.  |



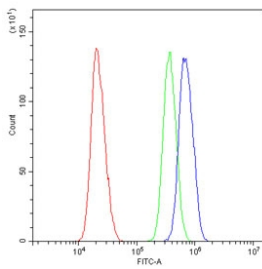
Western blot testing of human 1) HeLa, 2) Jurkat and 3) HUT lysate with EME1 antibody. Expected molecular weight ~63 kDa.



IHC testing of FFPE human lung cancer tissue with EME1 antibody. HIER: Boil the paraffin sections in pH 6, 10mM citrate buffer for 20 minutes and allow to cool prior to staining.



IHC testing of FFPE rat intestine with EME1 antibody. HIER: Boil the paraffin sections in pH 6, 10mM citrate buffer for 20 minutes and allow to cool prior to staining.



Flow cytometry testing of human U-2 OS cells with EME1 antibody at 1ug/10<sup>6</sup> cells (blocked with goat sera); Red=cells alone, Green=isotype control, Blue= EME1 antibody.

## Description

Crossover junction endonuclease EME1 is an enzyme that in humans is encoded by the EME1 gene. It is mapped to 17q21.33. This gene encodes a protein that complexes with methyl methanesulfonate-sensitive UV-sensitive 81 protein to form an endonuclease complex. The encoded protein interacts with specific DNA structures including nicked Holliday junctions, 3'-flap structures and aberrant replication fork structures. Also, this protein may be involved in repairing DNA damage and in maintaining genomic stability. Alternative splicing results in multiple transcript variants.

## Application Notes

Optimal dilution of the EME1 antibody should be determined by the researcher.

## Immunogen

Amino acids DKERQNLLADIQVRRGEGVTSTSRRIPELSRRIYLQMTTLQ of human EME1 were used as the immunogen for the EME1 antibody.

## Storage

After reconstitution, the EME1 antibody can be stored for up to one month at 4°C. For long-term, aliquot and store at -20°C. Avoid repeated freezing and thawing.

