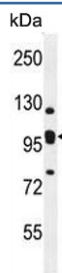


EMC1 Antibody / KIAA0090 (F54539)

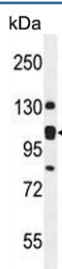
Catalog No.	Formulation	Size
F54539-0.4ML	In 1X PBS, pH 7.4, with 0.09% sodium azide	0.4 ml
F54539-0.08ML	In 1X PBS, pH 7.4, with 0.09% sodium azide	0.08 ml

[Bulk quote request](#)

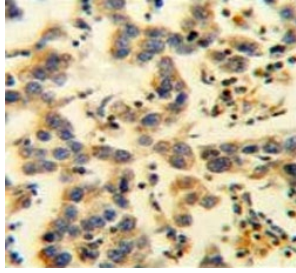
Availability	1-3 business days
Species Reactivity	Human, Mouse
Format	Purified
Host	Rabbit
Clonality	Polyclonal (rabbit origin)
Isotype	Rabbit Ig
Purity	Antigen affinity purified
UniProt	Q8N766
Applications	Flow Cytometry : 1:25 (1x10 ⁶ cells) Immunohistochemistry (FFPE) : 1:25 Western Blot : 1:500-1:2000
Limitations	This EMC1 antibody is available for research use only.



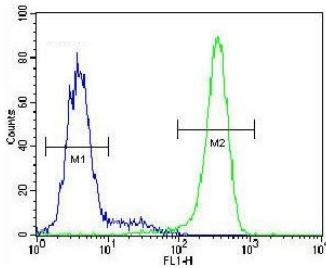
Western blot testing of mouse spleen lysate with EMC1 antibody. Predicted molecular weight ~112 kDa.



Western blot testing of human HepG2 cell lysate with EMC1 antibody. Predicted molecular weight ~112 kDa.



IHC testing of FFPE human testis carcinoma tissue with EMC1 antibody. HIER: steam section in pH6 citrate buffer for 20 min and allow to cool prior to staining.



Flow cytometry testing of human HepG2 cells with EMC1 antibody; Blue=isotype control, Green= EMC1 antibody.

Description

EMC1, or ER membrane protein complex subunit 1, is part of the endoplasmic reticulum membrane protein complex (EMC) that enables the energy-independent insertion into endoplasmic reticulum membranes of newly synthesized membrane proteins

Application Notes

The stated application concentrations are suggested starting points. Titration of the EMC1 antibody may be required due to differences in protocols and secondary/substrate sensitivity.

Immunogen

A portion of amino acids 866-894 from the human protein was used as the immunogen for the EMC1 antibody.

Storage

Aliquot the EMC1 antibody and store frozen at -20oC or colder. Avoid repeated freeze-thaw cycles.