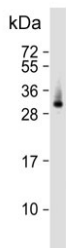


ELOVL6 Antibody (F54857)

Catalog No.	Formulation	Size
F54857-0.4ML	In 1X PBS, pH 7.4, with 0.09% sodium azide	0.4 ml
F54857-0.08ML	In 1X PBS, pH 7.4, with 0.09% sodium azide	0.08 ml

[Bulk quote request](#)

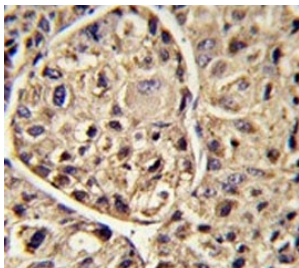
Availability	1-3 business days
Species Reactivity	Human, Mouse
Format	Purified
Host	Rabbit
Clonality	Polyclonal (rabbit origin)
Isotype	Rabbit Ig
Purity	Purified
UniProt	Q9H5J4
Localization	Cytoplasmic
Applications	Flow Cytometry : 1:10-1:50 (1x10 ⁶ cells) Immunohistochemistry (FFPE) : 1:50-1:100 Western Blot : 1:500-1:1000
Limitations	This ELOVL6 antibody is available for research use only.



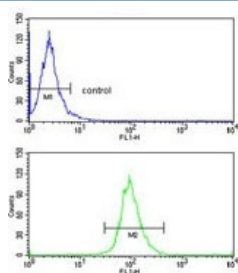
Western blot testing of human lung tissue lysate with ELOVL6 antibody. Predicted molecular weight ~31 kDa.

kDa
130
72
55
36
28
17

Western blot testing of mouse liver tissue lysate with ELOVL6 antibody. Predicted molecular weight ~31 kDa.



IHC testing of FFPE human hepatocellular carcinoma tissue with ELOVL6 antibody. HIER: steam section in pH6 citrate buffer for 20 min and allow to cool prior to staining.



Flow cytometry testing of human HepG2 cells with ELOVL6 antibody; Blue=isotype control, Green= ELOVL6 antibody.

Description

Fatty acid elongases (EC 6.2.1.3), such as ELOVL6, use malonyl-CoA as a 2-carbon donor in the first and rate-limiting step of fatty acid elongation.

Application Notes

The stated application concentrations are suggested starting points. Titration of the ELOVL6 antibody may be required due to differences in protocols and secondary/substrate sensitivity.

Immunogen

A portion of amino acids 32-58 from the human protein was used as the immunogen for the ELOVL6 antibody.

Storage

Aliquot the ELOVL6 antibody and store frozen at -20°C or colder. Avoid repeated freeze-thaw cycles.