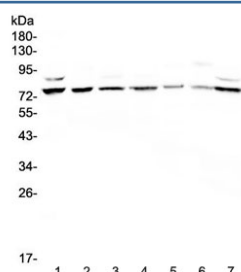


Elf-1 Antibody / E74 like factor 1 (RQ4212)

Catalog No.	Formulation	Size
RQ4212	0.5mg/ml if reconstituted with 0.2ml sterile DI water	100 ug

Bulk quote request

Availability	1-3 business days
Species Reactivity	Human
Predicted Reactivity	Mouse, Rat
Format	Antigen affinity purified
Host	Rabbit
Clonality	Polyclonal (rabbit origin)
Isotype	Rabbit IgG
Purity	Antigen affinity purified
Buffer	Lyophilized from 1X PBS with 2% Trehalose and 0.025% sodium azide
UniProt	P32519
Localization	Nuclear, cytoplasmic
Applications	Western Blot : 0.5-1ug/ml
Limitations	This Elf-1 antibody is available for research use only.



Western blot testing of human 1) HeLa, 2) COLO320, 3) A549, 4) PANC-1, 5) A431, 6) Jurkat and 7) 293T cell lysate with Elf-1 antibody at 0.5ug/ml. Expected molecular weight: ~68 kDa (unmodified) up to ~80 kDa (phosphorylated/glycosylated cytoplasmic form) and up to ~98 kDa (phosphorylated/glycosylated nuclear form).

Description

E74-like factor 1 (ets domain transcription factor) is a protein that in humans is encoded by the ELF1 gene. It is mapped to chromosome 13q13. This gene encodes an E26 transformation-specific related transcription factor. The encoded protein is primarily expressed in lymphoid cells and acts as both an enhancer and a repressor to regulate transcription of

various genes. Alternative splicing results in multiple transcript variants.

Application Notes

Optimal dilution of the Elf-1 antibody should be determined by the researcher.

Immunogen

Amino acids QPTQSPYPTQLFRTVHVVPVQAVPEGEAARTSTMQDE were used as the immunogen for the Elf-1 antibody.

Storage

After reconstitution, the Elf-1 antibody can be stored for up to one month at 4°C. For long-term, aliquot and store at -20°C. Avoid repeated freezing and thawing.