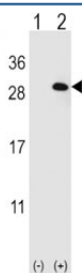


EIF4E2 Antibody (F47421)

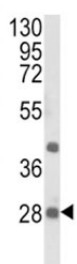
Catalog No.	Formulation	Size
F47421-0.4ML	In 1X PBS, pH 7.4, with 0.09% sodium azide	0.4 ml
F47421-0.08ML	In 1X PBS, pH 7.4, with 0.09% sodium azide	0.08 ml

[Bulk quote request](#)

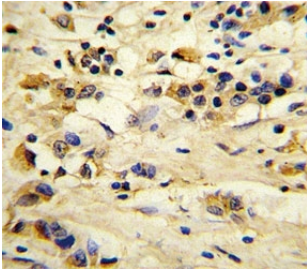
Availability	1-3 business days
Species Reactivity	Human
Format	Antigen affinity purified
Host	Rabbit
Clonality	Polyclonal (rabbit origin)
Isotype	Rabbit Ig
Purity	Antigen affinity
UniProt	O60573
Applications	Western Blot : 1:1000 IHC (Paraffin) : 1:10-1:50
Limitations	This EIF4E2 antibody is available for research use only.



Western blot analysis of EIF4E2 antibody and 293 cell lysate (2 ug/lane) either nontransfected (Lane 1) or transiently transfected (2) with the EIF4E2 gene.



Western blot analysis of EIF4E2 antibody and NCI-H460 lysate. Predicted molecular weight: ~28 kDa.



IHC analysis of FFPE human breast carcinoma stained with EIF4E2 antibody

Description

EIF4E2 is expressed exclusively in the cytoplasm. This protein recognizes and binds the 7 methylguanosine containing mRNA cap during an early step in the initiation of protein synthesis and facilitates ribosome binding by inducing the unwinding of the mRNAs secondary structures.

Application Notes

Titration of the EIF4E2 antibody may be required due to differences in protocols and secondary/substrate sensitivity.

Immunogen

This EIF4E2 antibody was produced from rabbits immunized with human EIF4E2 recombinant protein.

Storage

Aliquot the EIF4E2 antibody and store frozen at -20oC or colder. Avoid repeated freeze-thaw cycles.