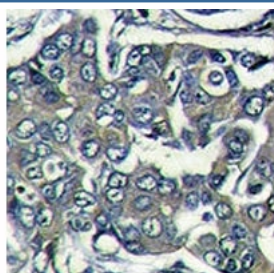


EIF4E2 Antibody (F47420)

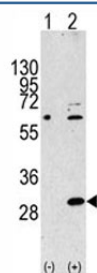
Catalog No.	Formulation	Size
F47420-0.4ML	In 1X PBS, pH 7.4, with 0.09% sodium azide	0.4 ml
F47420-0.08ML	In 1X PBS, pH 7.4, with 0.09% sodium azide	0.08 ml

[Bulk quote request](#)

Availability	1-3 business days
Species Reactivity	Human
Format	Purified
Host	Rabbit
Clonality	Polyclonal (rabbit origin)
Isotype	Rabbit Ig
Purity	Purified
UniProt	O60573
Applications	Western Blot : 1:1000 IHC (Paraffin) : 1:50-1:100
Limitations	This EIF4E2 antibody is available for research use only.



IHC analysis of formalin fixed paraffin embedded human breast carcinoma stained with EIF4E2 antibody



Western blot analysis of EIF4E2 antibody and 293 cell lysate either nontransfected (Lane 1) or transiently transfected with the EIF4E2 gene (2).

Description

EIF4E2 is expressed exclusively in the cytoplasm. This protein recognizes and binds the 7 methylguanosine containing mRNA cap during an early step in the initiation of protein synthesis and facilitates ribosome binding by inducing the unwinding of the mRNAs secondary structures.

Application Notes

The stated application concentrations are suggested starting amounts. Titration of the EIF4E2 antibody may be required due to differences in protocols and secondary/substrate sensitivity.

Immunogen

A portion of amino acids 12-41 from the human protein was used as the immunogen for this EIF4E2 antibody.

Storage

Store at 4oC for up to one month. For long term, aliquot the EIF4E2 antibody and store frozen at -20oC or colder. Avoid repeated freeze-thaw cycles.