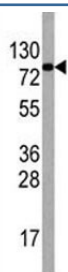


EIF4B Antibody (F40109)

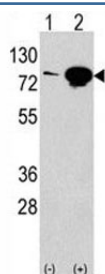
Catalog No.	Formulation	Size
F40109-0.4ML	In 1X PBS, pH 7.4, with 0.09% sodium azide	0.4 ml
F40109-0.08ML	In 1X PBS, pH 7.4, with 0.09% sodium azide	0.08 ml

[Bulk quote request](#)

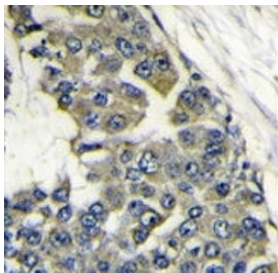
Availability	1-3 business days
Species Reactivity	Human
Predicted Reactivity	Mouse
Format	Purified
Host	Rabbit
Clonality	Polyclonal (rabbit origin)
Isotype	Rabbit Ig
Purity	Purified
UniProt	P23588
Applications	Western Blot : 1:1000 IHC (Paraffin) : 1:50-1:100
Limitations	This EIF4B antibody is available for research use only.



Western blot analysis of EIF4B antibody and HepG2 lysate.



Western blot analysis of EIF4B antibody and 293 lysate transiently transfected with the EIF4B gene (2ug/lane).



IHC analysis of FFPE human breast carcinoma stained with EIF4B antibody

Description

EIF4B is required for the binding of mRNA to ribosomes. It functions in close association with EIF4-F and EIF4-A by binding near the 5'- terminal cap of mRNA in presence of EIF-4F and ATP. This gene also promotes the ATPase activity and the ATP-dependent RNA unwinding activity of both EIF4-A and EIF4-F

Application Notes

Titration of the EIF4B antibody may be required due to differences in protocols and secondary/substrate sensitivity.

Immunogen

A portion of amino acids 353-382 from the human protein was used as the immunogen for this EIF4B antibody.

Storage

Aliquot the EIF4B antibody and store frozen at -20oC or colder. Avoid repeated freeze-thaw cycles.