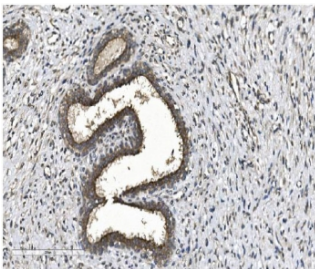


EIF2B1 Antibody (RQ5722)

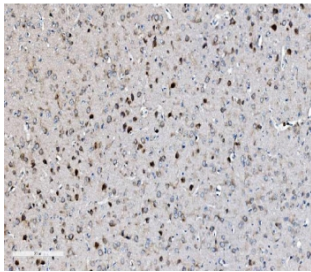
Catalog No.	Formulation	Size
RQ5722	0.5mg/ml if reconstituted with 0.2ml sterile DI water	100 ug

Bulk quote request

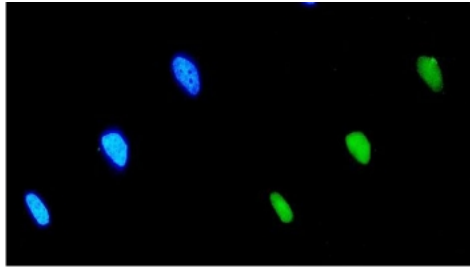
Availability	1-3 business days
Species Reactivity	Human, Mouse, Rat
Format	Antigen affinity purified
Host	Rabbit
Clonality	Polyclonal
Isotype	Rabbit IgG
Purity	Affinity purified
Buffer	Lyophilized from 1X PBS with 2% Trehalose and 0.025% sodium azide
UniProt	Q14232
Localization	Cytoplasmic, nuclear
Applications	Western Blot : 0.5-1ug/ml Immunohistochemistry : 1-2ug/ml Immunofluorescence : 2-4ug/ml Flow Cytometry : 1-3ug/million cells
Limitations	This EIF2B1 antibody is available for research use only.



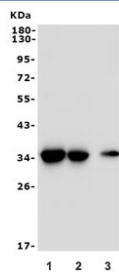
IHC staining of FFPE human breast cancer with EIF2B1 antibody. HIER: boil tissue sections in pH8 EDTA for 20 min and allow to cool before testing.



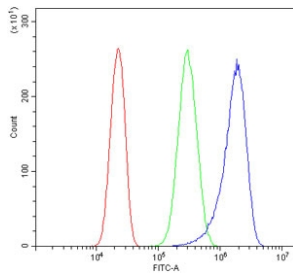
IHC staining of FFPE rat brain with EIF2B1 antibody. HIER: boil tissue sections in pH8 EDTA for 20 min and allow to cool before testing.



Immunofluorescent staining of FFPE human HeLa cells with EIF2B1 antibody (green) and DAPI nuclear stain (blue). HIER: steam section in pH6 citrate buffer for 20 min.



Western blot testing of 1) rat liver, 2) rat kidney and 3) mouse liver lysate with EIF2B1 antibody. Predicted molecular weight ~34 kDa.



Flow cytometry testing of human PC-3 cells with EIF2B1 antibody at 1ug/million cells (blocked with goat sera); Red=cells alone, Green=isotype control, Blue= EIF2B1 antibody.

Description

Translation initiation factor eIF-2B subunit alpha is a protein that in humans is encoded by the EIF2B1 gene. This gene encodes one of five subunits of eukaryotic translation initiation factor 2B (EIF2B), a GTP exchange factor for eukaryotic initiation factor 2 and an essential regulator for protein synthesis. Mutations in this gene and the genes encoding other EIF2B subunits have been associated with leukoencephalopathy with vanishing white matter.

Application Notes

Optimal dilution of the EIF2B1 antibody should be determined by the researcher.

Immunogen

Amino acids AESFKFVRLFPLNQQD from the human protein were used as the immunogen for the EIF2B1 antibody.

Storage

After reconstitution, the EIF2B1 antibody can be stored for up to one month at 4°C. For long-term, aliquot and store at -20°C. Avoid repeated freezing and thawing.

