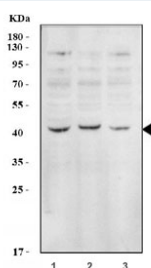


## EIF2B Antibody / EIF2S2 (R31277)

Catalog No.	Formulation	Size
R31277	0.5mg/ml if reconstituted with 0.2ml sterile DI water	100 ug

**Bulk quote request**

<b>Availability</b>	1-3 business days
<b>Species Reactivity</b>	Human
<b>Format</b>	Antigen affinity purified
<b>Host</b>	Rabbit
<b>Clonality</b>	Polyclonal (rabbit origin)
<b>Isotype</b>	Rabbit IgG
<b>Purity</b>	Antigen affinity
<b>Buffer</b>	Lyophilized from 1X PBS with 2.5% BSA and 0.025% sodium azide/thimerosal
<b>UniProt</b>	P20042
<b>Applications</b>	Western Blot : 0.5-1ug/ml
<b>Limitations</b>	This EIF2B antibody is available for research use only.



Western blot testing of human 1) HepG2, 2) 293T and 3) Raji cell lysate with EIF2B antibody. Expected molecular weight: ~38 kDa.

## Description

Eukaryotic translation initiation factor 2 subunit 2, also called EIF2B, is a protein that in humans is encoded by the EIF2S2 gene. This gene belongs to the EIF-2-beta family. Eukaryotic translation initiation factor 2 (EIF2) functions in the early steps of protein synthesis by forming a ternary complex with GTP and initiator tRNA and binding to a 40S ribosomal subunit. EIF2 is composed of three subunits, alpha, beta, and gamma, with the protein encoded by this gene representing the beta subunit. The beta subunit catalyzes the exchange of GDP for GTP, which recycles the EIF2 complex for another round of initiation.

## Application Notes

The stated application concentrations are suggested starting amounts. Titration of the EIF2B antibody may be required due to differences in protocols and secondary/substrate sensitivity.

## Immunogen

An amino acid sequence from the C-terminus of human EIF2 beta (FQAVTGKRAQLRAKAN) was used as the immunogen for this EIF2B antibody (100% homologous in human, mouse and rat).

## Storage

After reconstitution, the EIF2B antibody can be stored for up to one month at 4°C. For long-term, aliquot and store at -20°C. Avoid repeated freezing and thawing.