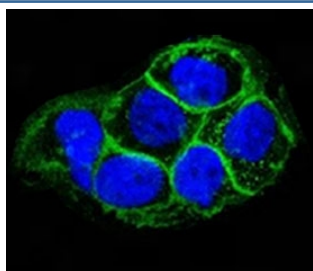


EGFR Antibody [clone ERB59-1] (V7040)

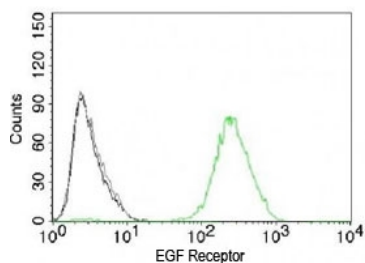
Catalog No.	Formulation	Size
V7040-100UG	0.2 mg/ml in 1X PBS with 0.1 mg/ml BSA (US sourced) and 0.05% sodium azide	100 ug
V7040-20UG	0.2 mg/ml in 1X PBS with 0.1 mg/ml BSA (US sourced) and 0.05% sodium azide	20 ug
V7040SAF-100UG	1 mg/ml in 1X PBS; BSA free, sodium azide free	100 ug

[Bulk quote request](#)

Species Reactivity	Human
Format	Purified
Clonality	Monoclonal (mouse origin)
Isotype	Mouse IgG2a, kappa
Clone Name	ERB59-1
Purity	Protein G affinity chromatography
Buffer	1X PBS, pH 7.4
UniProt	P00533
Gene ID	1956
Localization	Cell surface
Applications	Flow Cytometry : 1-2ug/million cells in 0.1ml Immunofluorescence : 1-2ug/ml
Limitations	This EGFR antibody is available for research use only.



Immunofluorescent testing of A431 cells and Alexa Fluor conjugated EGFR antibody (green, clone ERB59-1) with DAPI nuclear stain (blue).



FACS testing of A431 cells with isotype control (gray), without primary antibody (black) and EGFR antibody (green, clone ERB59-1).

Description

Receptor tyrosine kinase binding ligands of the EGF family and activating several signaling cascades to convert extracellular cues into appropriate cellular responses. Known ligands include EGF, TGFA/TGF- α , amphiregulin, epigen/EPGN, BTC/betacellulin, epiregulin/EREG and HBEGF/heparin-binding EGF. Ligand binding triggers receptor homo- and/or heterodimerization and autophosphorylation on key cytoplasmic residues. The phosphorylated receptor recruits adapter proteins like GRB2 which in turn activates complex downstream signaling cascades. Activates at least 4 major downstream signaling cascades including the RAS-RAF-MEK-ERK, PI3 kinase-AKT, PLCgamma-PKC and STATs modules. [UniProt]

Application Notes

The concentration stated for each application is a general starting point. Variations in protocols, secondaries and substrates may require the EGFR antibody to be titrated up or down for optimal performance.

Immunogen

Recombinant human protein was used as the immunogen for this EGFR antibody.

Storage

Store the EGFR antibody at 2-8°C (with azide) or aliquot and store at -20°C or colder (without azide).