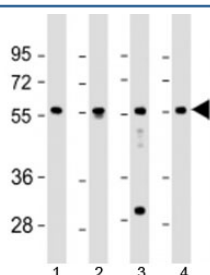


EFS Antibody (F53841)

Catalog No.	Formulation	Size
F53841-0.2ML	In 1X PBS, pH 7.4, with 0.09% sodium azide	0.2 ml
F53841-0.05ML	In 1X PBS, pH 7.4, with 0.09% sodium azide	0.05 ml

[Bulk quote request](#)

Availability	1-3 business days
Species Reactivity	Human
Format	Antigen affinity purified
Host	Rabbit
Clonality	Polyclonal (rabbit origin)
Isotype	Rabbit Ig
Purity	Antigen affinity
UniProt	O43281
Applications	Western Blot : 1:1000-1:2000
Limitations	This EFS antibody is available for research use only.



Western blot testing of human 1) fetal liver, 2) lung, 3) Jurkat and 4) K562 cell lysate with EFS antibody at 1:2000. Predicted molecular weight: 59 kDa.

Description

Embryonal Fyn-associated substrate is a docking protein which plays a central coordinating role for tyrosine-kinase-based signaling related to cell adhesion. May serve as an activator of SRC and a downstream effector. Interacts with the SH3 domain of FYN and with CRK, SRC, and YES (By similarity).

Application Notes

Titration of the EFS antibody may be required due to differences in protocols and secondary/substrate sensitivity.

Immunogen

A portion of amino acids 367-399 from the human protein was used as the immunogen for the EFS antibody.

Storage

Aliquot the EFS antibody and store frozen at -20oC or colder. Avoid repeated freeze-thaw cycles.