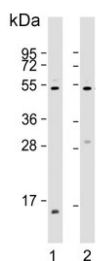


EFEMP1 Antibody / Fibulin 3 (F55016)

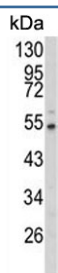
Catalog No.	Formulation	Size
F55016-0.4ML	In 1X PBS, pH 7.4, with 0.09% sodium azide	0.4 ml
F55016-0.08ML	In 1X PBS, pH 7.4, with 0.09% sodium azide	0.08 ml

[Bulk quote request](#)

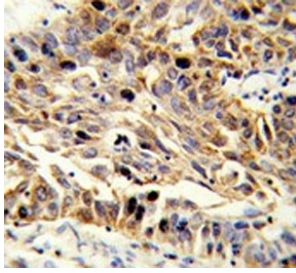
Availability	1-3 business days
Species Reactivity	Human, Mouse
Format	Purified
Host	Rabbit
Clonality	Polyclonal (rabbit origin)
Isotype	Rabbit Ig
Purity	Antigen affinity purified
UniProt	Q12805
Applications	Flow Cytometry : 1:10-1:50 (1x10e6 cells) Immunohistochemistry (FFPE) : 1:50-1:100 Western Blot : 1:500-1:1000
Limitations	This EFEMP1 antibody is available for research use only.



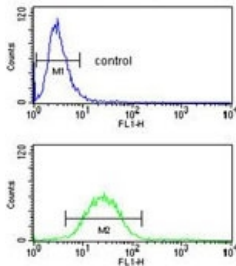
Western blot testing of human 1) A431 and 2) HUVEC lysate with EFEMP1 antibody. Predicted molecular weight ~54 kDa.



Western blot testing of mouse lung tissue lysate with EFEMP1 antibody. Predicted molecular weight ~54 kDa.



IHC testing of FFPE human lung carcinoma tissue with EFEMP1 antibody. HIER: steam section in pH6 citrate buffer for 20 min and allow to cool prior to staining.



Flow cytometry testing of human NCI-H460 cells with EFEMP1 antibody; Blue=isotype control, Green= EFEMP1 antibody.

Description

EFEMP1 encodes a member of the fibulin family of extracellular matrix glycoproteins. Like all members of this family, EGF-containing fibulin-like extracellular matrix protein 1 contains tandemly repeated epidermal growth factor-like repeats followed by a C-terminus fibulin-type domain. This gene is upregulated in malignant gliomas and may play a role in the aggressive nature of these tumors.

Application Notes

The stated application concentrations are suggested starting points. Titration of the EFEMP1 antibody may be required due to differences in protocols and secondary/substrate sensitivity.

Immunogen

A portion of amino acids 119-148 from the human protein was used as the immunogen for the EFEMP1 antibody.

Storage

Aliquot the EFEMP1 antibody and store frozen at -20oC or colder. Avoid repeated freeze-thaw cycles.