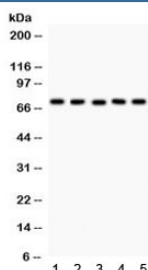


## EED Antibody (R31834)

Catalog No.	Formulation	Size
R31834	0.5mg/ml if reconstituted with 0.2ml sterile DI water	100 ug

**Bulk quote request**

<b>Availability</b>	1-3 business days
<b>Species Reactivity</b>	Human, Rat
<b>Format</b>	Antigen affinity purified
<b>Host</b>	Rabbit
<b>Clonality</b>	Polyclonal (rabbit origin)
<b>Isotype</b>	Rabbit IgG
<b>Purity</b>	Antigen affinity
<b>Buffer</b>	Lyophilized from 1X PBS with 2.5% BSA and 0.025% sodium azide
<b>UniProt</b>	O75530
<b>Applications</b>	Western Blot : 0.1-0.5ug/ml
<b>Limitations</b>	This EED antibody is available for research use only.



Western blot testing of 1) rat heart, 2) rat kidney, 3) rat liver, 4) rat lung, and 5) human SKOV lysate with EED antibody. Multiple isoforms can be observed from 30~65 kDa.

## Description

Polycomb protein EED is a protein that in humans is encoded by the EED gene. It is a member of the Polycomb-group (PcG) family. PcG family members form multimeric protein complexes, which are involved in maintaining the transcriptional repressive state of genes over successive cell generations. This protein interacts with enhancer of zeste 2, the cytoplasmic tail of integrin beta-7, immunodeficiency virus type 1 (HIV-1) MA protein, and histone deacetylase proteins. Furthermore, this protein mediates repression of gene activity through histone deacetylation, and may act as a specific regulator of integrin function. Two transcript variants encoding distinct isoforms have been identified for this gene.

## **Application Notes**

Optimal dilution of the EED antibody should be determined by the researcher.

## **Immunogen**

Amino acids 256-441 of human EED were used as the immunogen for the EED antibody.

## **Storage**

After reconstitution, the EED antibody can be stored for up to one month at 4oC. For long-term, aliquot and store at -20oC. Avoid repeated freezing and thawing.