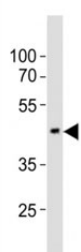


## EED Antibody (F53258)

Catalog No.	Formulation	Size
F53258-0.4ML	In 1X PBS, pH 7.4, with 0.09% sodium azide	0.4 ml
F53258-0.08ML	In 1X PBS, pH 7.4, with 0.09% sodium azide	0.08 ml

[Bulk quote request](#)

<b>Availability</b>	1-3 business days
<b>Species Reactivity</b>	Human, Mouse
<b>Format</b>	Antigen affinity purified
<b>Clonality</b>	Polyclonal (rabbit origin)
<b>Isotype</b>	Rabbit Ig
<b>Purity</b>	Antigen affinity
<b>UniProt</b>	O75530
<b>Applications</b>	Western Blot : 1:1000
<b>Limitations</b>	This EED antibody is available for research use only.



Western blot testing of EED antibody at 1:1000 dilution + mouse brain lysate; Predicted molecular weight: 50 kDa (isoform 1), 53 kDa (isoform 2), 46 kDa (isoform 3).

## Description

Polycomb protein EED is a member of the Polycomb-group (PcG) family. PcG family members form multimeric protein complexes, which are involved in maintaining the transcriptional repressive state of genes over successive cell generations. This protein interacts with enhancer of zeste 2, the cytoplasmic tail of integrin  $\beta 7$ , immunodeficiency virus type 1 (HIV-1) MA protein, and histone deacetylase proteins. This protein mediates repression of gene activity through histone deacetylation, and may act as a specific regulator of integrin function. Two transcript variants encoding distinct isoforms have been identified for this gene. [Wiki]

## Application Notes

Titration of the EED antibody may be required due to differences in protocols and secondary/substrate sensitivity.

## **Immunogen**

This EED antibody was produced from a rabbit immunized with a KLH conjugated synthetic peptide between 38-72 amino acids from the N-terminal region of human EED.

## **Storage**

Aliquot the EED antibody and store frozen at -20oC or colder. Avoid repeated freeze-thaw cycles.