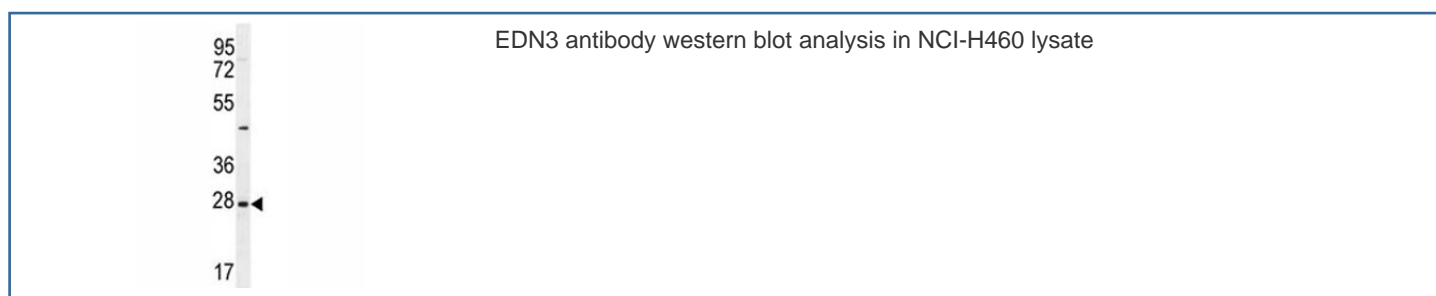


## EDN3 Antibody (F40093)

Catalog No.	Formulation	Size
F40093-0.4ML	In 1X PBS, pH 7.4, with 0.09% sodium azide	0.4 ml
F40093-0.08ML	In 1X PBS, pH 7.4, with 0.09% sodium azide	0.08 ml

[Bulk quote request](#)

<b>Availability</b>	1-3 business days
<b>Species Reactivity</b>	Human
<b>Format</b>	Antigen affinity purified
<b>Host</b>	Rabbit
<b>Clonality</b>	Polyclonal (rabbit origin)
<b>Isotype</b>	Rabbit Ig
<b>Purity</b>	Antigen affinity
<b>UniProt</b>	P14138
<b>Applications</b>	Western Blot : 1:1000
<b>Limitations</b>	This EDN3 antibody is available for research use only.



## Description

The protein encoded by this gene is a member of the endothelin family. Endothelins are endothelium-derived vasoactive peptides involved in a variety of biological functions. The active form of this protein is a 21 amino acid peptide processed from the precursor protein. The active peptide is a ligand for endothelin receptor type B (EDNRB). The interaction of this endothelin with EDNRB is essential for development of neural crest-derived cell lineages, such as melanocytes and enteric neurons. Mutations in this gene and EDNRB have been associated with Hirschsprung disease (HSCR) and Waardenburg syndrome (WS), which are congenital disorders involving neural crest-derived cells. Four alternatively spliced transcript variants encoding three distinct isoforms have been observed.

## Application Notes

Titration of the EDN3 antibody may be required due to differences in protocols and secondary/substrate sensitivity.

## Immunogen

A portion of amino acids 168-197 from the human protein was used as the immunogen for this EDN3 antibody.

## Storage

Aliquot the EDN3 antibody and store frozen at -20oC or colder. Avoid repeated freeze-thaw cycles.