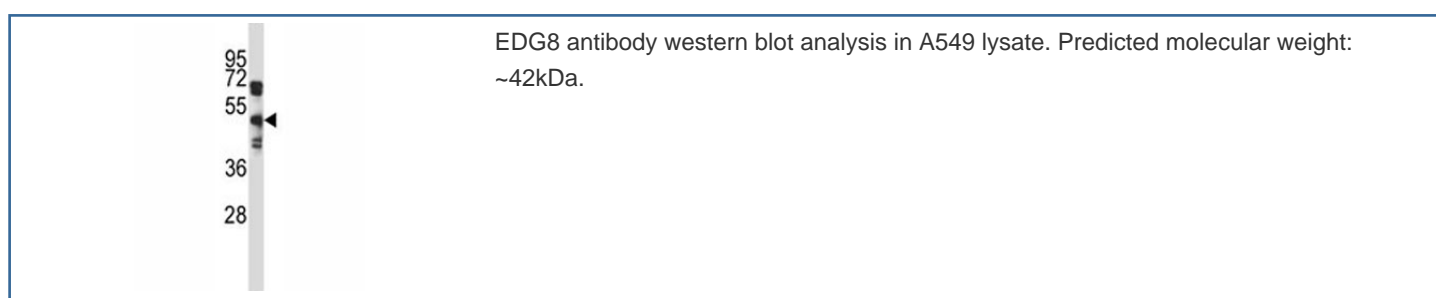


EDG8 Antibody (F43818)

Catalog No.	Formulation	Size
F43818-0.4ML	In 1X PBS, pH 7.4, with 0.09% sodium azide	0.4 ml
F43818-0.08ML	In 1X PBS, pH 7.4, with 0.09% sodium azide	0.08 ml

[Bulk quote request](#)

Availability	1-3 business days
Species Reactivity	Human
Format	Antigen affinity purified
Clonality	Polyclonal (rabbit origin)
Isotype	Rabbit Ig
Purity	Antigen affinity
UniProt	Q9H228
Applications	Western Blot : 1:1000
Limitations	This EDG8 antibody is available for research use only.



Description

The lysosphingolipid sphingosine 1-phosphate (S1P) regulates cell proliferation, apoptosis, motility, and neurite retraction. Its actions may be both intracellular as a second messenger and extracellular as a receptor ligand. S1P and the structurally related lysolipid mediator lysophosphatidic acid (LPA) signal cells through a set of G protein-coupled receptors known as EDG receptors. Some EDG receptors (e.g., EDG1; MIM 601974) are S1P receptors; others (e.g., EDG2; MIM 602282) are LPA receptors.

Application Notes

Titration of the EDG8 antibody may be required due to differences in protocols and secondary/substrate sensitivity.

Immunogen

A portion of amino acids 219-247 from the human protein was used as the immunogen for this EDG8 antibody.

Storage

Aliquot the EDG8 antibody and store frozen at -20oC or colder. Avoid repeated freeze-thaw cycles.