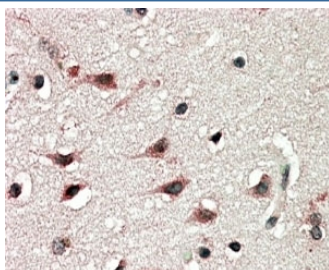


## DYX1C1 Antibody (R34480)

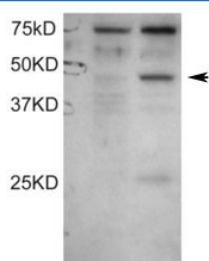
Catalog No.	Formulation	Size
R34480-100UG	0.5 mg/ml in 1X TBS, pH7.3, with 0.5% BSA (US sourced) and 0.02% sodium azide	100 ug

[Bulk quote request](#)

<b>Availability</b>	1-3 business days
<b>Species Reactivity</b>	Human
<b>Predicted Reactivity</b>	Mouse, Rat
<b>Format</b>	Antigen affinity purified
<b>Clonality</b>	Polyclonal (goat origin)
<b>Isotype</b>	Goat Ig
<b>Purity</b>	Antigen affinity
<b>Gene ID</b>	161582
<b>Applications</b>	Western Blot : 0.1-0.3ug/ml Immunohistochemistry (FFPE) : 5-10ug/ml ELISA (peptide) LOD : 1:16000
<b>Limitations</b>	This DYX1C1 antibody is available for research use only.



IHC staining of FFPE human cerebral cortex with DYX1C1 antibody at 5ug/ml. HIER: steamed with pH6 citrate buffer, AP-staining.



Western blot testing of COS1 cell lysates: untransfected (left lane) and transfected with full length human DYX1C1 (right lane). DYX1C1 antibody was used at 0.1ug/ml. Predicted molecular weight: ~48kDa.

## Description

Additional name(s) for this target protein: Dyslexia susceptibility 1 candidate 1

## Application Notes

Optimal dilution of the DYX1C1 antibody should be determined by the researcher.

## Immunogen

Amino acids KIRNVIQGTELKS were used as the immunogen for this DYX1C1 antibody. This sequence is specific to isoform a.

## Storage

Aliquot and store the DYX1C1 antibody at -20oC.