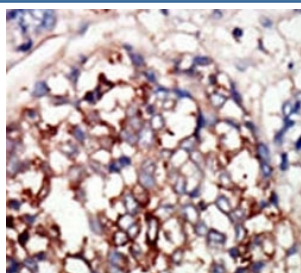


## DYRK1B Antibody (F50487)

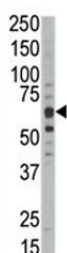
Catalog No.	Formulation	Size
F50487-0.4ML	In 1X PBS, pH 7.4, with 0.09% sodium azide	0.4 ml
F50487-0.08ML	In 1X PBS, pH 7.4, with 0.09% sodium azide	0.08 ml

[Bulk quote request](#)

<b>Availability</b>	1-3 business days
<b>Species Reactivity</b>	Human, Mouse
<b>Format</b>	Purified
<b>Clonality</b>	Polyclonal (rabbit origin)
<b>Isotype</b>	Rabbit Ig
<b>Purity</b>	Purified
<b>UniProt</b>	Q9Y463
<b>Applications</b>	Western Blot : 1:1000 IHC (Paraffin) : 1:50-1:100
<b>Limitations</b>	This DYRK1B antibody is available for research use only.



IHC analysis of FFPE human hepatocarcinoma tissue stained with the DYRK1B antibody



Western blot analysis of DYRK1B antibody and mouse kidney tissue lysate. Predicted molecular weight :64-75 kDa (isoforms 1-3).

## Description

DYRK1B is a member of the DYRK family of protein kinases. DYRK1B contains a bipartite nuclear localization signal and is found mainly in muscle and testis. The protein is proposed to be involved in the regulation of nuclear functions. Three isoforms of DYRK1B have been identified differing in the presence of two alternatively spliced exons within the catalytic domain.

## Application Notes

Titration of the DYRK1B antibody may be required due to differences in protocols and secondary/substrate sensitivity.

## Immunogen

A portion of amino acids 561-589 from the human protein was used as the immunogen for this DYRK1B antibody.

## Storage

Aliquot the DYRK1B antibody and store frozen at -20oC or colder. Avoid repeated freeze-thaw cycles.