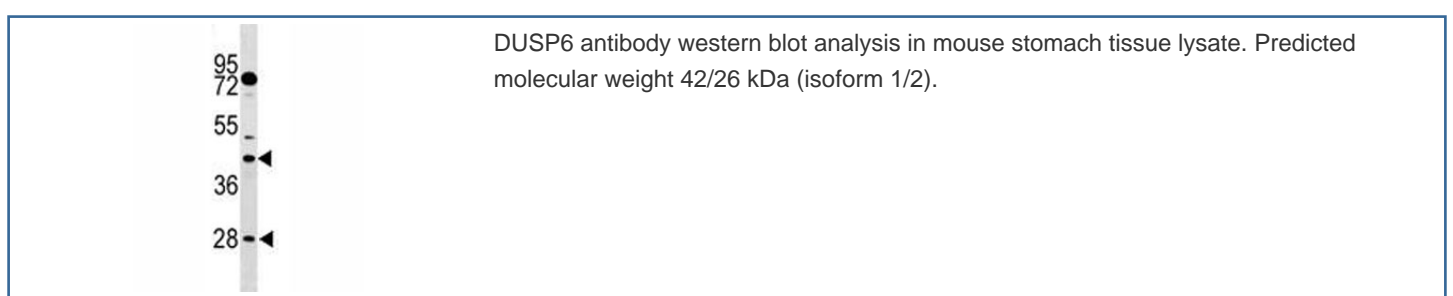
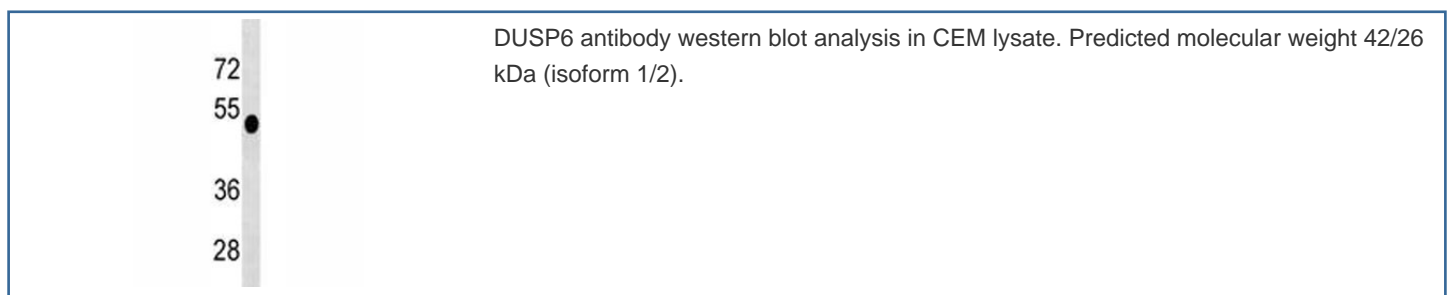


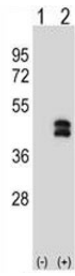
## DUSP6 Antibody (F45736)

Catalog No.	Formulation	Size
F45736-0.4ML	In 1X PBS, pH 7.4, with 0.09% sodium azide	0.4 ml
F45736-0.08ML	In 1X PBS, pH 7.4, with 0.09% sodium azide	0.08 ml

[Bulk quote request](#)

<b>Availability</b>	1-3 business days
<b>Species Reactivity</b>	Human, Mouse
<b>Predicted Reactivity</b>	Bovine
<b>Format</b>	Antigen affinity purified
<b>Host</b>	Rabbit
<b>Clonality</b>	Polyclonal (rabbit origin)
<b>Isotype</b>	Rabbit Ig
<b>Purity</b>	Antigen affinity
<b>UniProt</b>	Q16828
<b>Applications</b>	Western Blot : 1:1000
<b>Limitations</b>	This DUSP6 antibody is available for research use only.





Western blot analysis of DUSP6 antibody and 293 cell lysate either nontransfected (Lane 1) or transiently transfected (2) with the DUSP6 gene.

## Description

The protein encoded by this gene is a member of the dual specificity protein phosphatase subfamily. These phosphatases inactivate their target kinases by dephosphorylating both the phosphoserine/threonine and phosphotyrosine residues. They negatively regulate members of the mitogen-activated protein (MAP) kinase superfamily (MAPK/ERK, SAPK/JNK, p38), which are associated with cellular proliferation and differentiation. Different members of the family of dual specificity phosphatases show distinct substrate specificities for various MAP kinases, different tissue distribution and subcellular localization, and different modes of inducibility of their expression by extracellular stimuli. This gene product inactivates ERK2, is expressed in a variety of tissues with the highest levels in heart and pancreas, and unlike most other members of this family, is localized in the cytoplasm. Two transcript variants encoding different isoforms have been found for this gene.

## Application Notes

Titration of the DUSP6 antibody may be required due to differences in protocols and secondary/substrate sensitivity.

## Immunogen

A portion of amino acids 59-88 from the human protein was used as the immunogen for this DUSP6 antibody.

## Storage

Aliquot the DUSP6 antibody and store frozen at -20oC or colder. Avoid repeated freeze-thaw cycles.