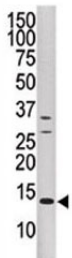


DUSP15 Antibody (F40176)

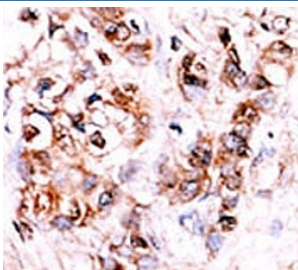
| Catalog No. | Formulation | Size |
|---------------|--|---------|
| F40176-0.4ML | In 1X PBS, pH 7.4, with 0.09% sodium azide | 0.4 ml |
| F40176-0.08ML | In 1X PBS, pH 7.4, with 0.09% sodium azide | 0.08 ml |

[Bulk quote request](#)

| | |
|-----------------------------|--|
| Availability | 1-3 business days |
| Species Reactivity | Human |
| Predicted Reactivity | Mouse |
| Format | Purified |
| Host | Rabbit |
| Clonality | Polyclonal (rabbit origin) |
| Isotype | Rabbit Ig |
| Purity | Purified |
| UniProt | Q9H1R2 |
| Applications | Western Blot : 1:1000 IHC (Paraffin) : 1:50-1:100 |
| Limitations | This DUSP15 antibody is available for research use only. |



Western blot analysis of DUSP15 antibody and CEM cell line lysate.



IHC analysis of FFPE human hepatocarcinoma stained with the DUSP15 antibody

Description

DUSP15 belongs to the non-receptor class of the protein-tyrosine phosphatase family. This protein has both protein-tyrosine phosphatase activity and serine/threonine-specific phosphatase activity, and therefore is known as a dual specificity phosphatase.

Application Notes

Titration of the DUSP15 antibody may be required due to differences in protocols and secondary/substrate sensitivity.

Immunogen

A portion of amino acids 17-44 from the human protein was used as the immunogen for this DUSP15 antibody.

Storage

Aliquot the DUSP15 antibody and store frozen at -20oC or colder. Avoid repeated freeze-thaw cycles.