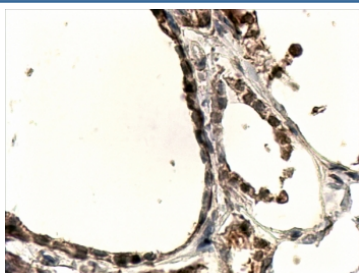


## DUOX1 Antibody (R33823)

Catalog No.	Formulation	Size
R33823-100UG	0.5 mg/ml in 1X TBS, pH7.3, with 0.5% BSA (US sourced) and 0.02% sodium azide	100 ug

[Bulk quote request](#)

Availability	1-3 business days
Species Reactivity	Human
Format	Antigen affinity purified
Clonality	Polyclonal (goat origin)
Isotype	Goat Ig
Purity	Antigen affinity
Gene ID	53905
Applications	Immunohistochemistry (FFPE) : 4-6ug/ml ELISA (peptide) LOD : 1:32000
Limitations	This DUOX1 antibody is available for research use only.



IHC testing of FFPE human thyroid gland with DUOX1 antibody at 4ug/ml. HIER: steamed with pH9 Tris/EDTA buffer, HRP-staining.

### Description

Additional name(s) for this target protein: Dual oxidase 1

### Application Notes

Optimal dilution of the DUOX1 antibody should be determined by the researcher.

### Immunogen

Amino acids EK FQRSC LHQT VQ were used as the immunogen for this DUOX1 antibody.

## Storage

Aliquot and store the DUOX1 antibody at -20oC.