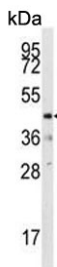


Dual specificity protein phosphatase 10 Antibody / DUSP10 (F54969)

Catalog No.	Formulation	Size
F54969-0.4ML	In 1X PBS, pH 7.4, with 0.09% sodium azide	0.4 ml
F54969-0.08ML	In 1X PBS, pH 7.4, with 0.09% sodium azide	0.08 ml

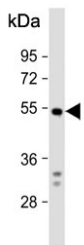
[Bulk quote request](#)

Availability	1-3 business days
Species Reactivity	Human, Mouse
Format	Purified
Host	Rabbit
Clonality	Polyclonal (rabbit origin)
Isotype	Rabbit Ig
Purity	Purified
UniProt	Q9Y6W6
Localization	Cytoplasmic, nuclear
Applications	Immunohistochemistry (FFPE) : 1:50-1:100 Western Blot : 1:500-1:1000
Limitations	This Dual specificity protein phosphatase 10 antibody is available for research use only.



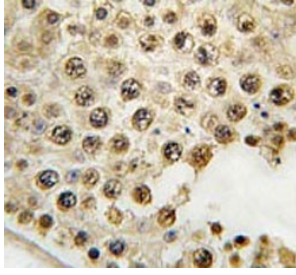
kDa
95
72
55
36
28
17

Western blot testing of mouse heart tissue lysate with Dual specificity protein phosphatase 10 antibody. Predicted molecular weight ~53 kDa.

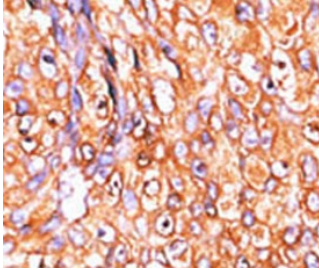


kDa
95
72
55
36
28

Western blot testing of human RD cell lysate with Dual specificity protein phosphatase 10 antibody. Predicted molecular weight ~53 kDa.



IHC testing of FFPE human testis tissue with Dual specificity protein phosphatase 10 antibody. HIER: steam section in pH6 citrate buffer for 20 min and allow to cool prior to staining.



IHC testing of FFPE human breast cancer tissue with Dual specificity protein phosphatase 10 antibody. HIER: steam section in pH6 citrate buffer for 20 min and allow to cool prior to staining.

Description

Dual specificity protein phosphatases inactivate their target kinases by dephosphorylating both the phosphoserine/threonine and phosphotyrosine residues. They negatively regulate members of the MAPK superfamily (MAPK/ERK, SAPK/JNK, p38), which is associated with cellular proliferation and differentiation. Different members of this family of dual specificity phosphatases show distinct substrate specificities for MAPKs, different tissue distribution and subcellular localization, and different modes of inducibility of their expression by extracellular stimuli. DUSP10 binds to and inactivates p38 and SAPK/JNK, but not MAPK/ERK. Its subcellular localization is unique; it is evenly distributed in both the cytoplasm and the nucleus. The protein is widely expressed in various tissues and organs, and its expression is elevated by stress stimuli.

Application Notes

The stated application concentrations are suggested starting points. Titration of the Dual specificity protein phosphatase 10 antibody may be required due to differences in protocols and secondary/substrate sensitivity.

Immunogen

A portion of amino acids 1-30 from the human protein was used as the immunogen for the Dual specificity protein phosphatase 10 antibody.

Storage

Aliquot the Dual specificity protein phosphatase 10 antibody and store frozen at -20°C or colder. Avoid repeated freeze-thaw cycles.

