

DSCR1 Antibody (F40133)

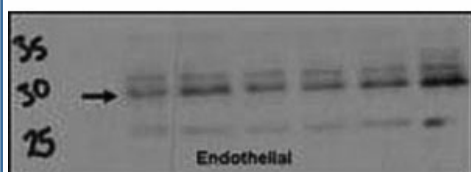
| Catalog No. | Formulation | Size |
|---------------|--|---------|
| F40133-0.4ML | In 1X PBS, pH 7.4, with 0.09% sodium azide | 0.4 ml |
| F40133-0.08ML | In 1X PBS, pH 7.4, with 0.09% sodium azide | 0.08 ml |

[Bulk quote request](#)

| | |
|---------------------------|---|
| Availability | 1-3 business days |
| Species Reactivity | Human |
| Format | Purified |
| Host | Rabbit |
| Clonality | Polyclonal (rabbit origin) |
| Isotype | Rabbit Ig |
| Purity | Purified |
| UniProt | P53805 |
| Applications | Western Blot : 1:1000 |
| Limitations | This DSCR1 antibody is available for research use only. |



DSCR1 antibody used in western blot to detect DSCR1 in endothelial cell lysate



Western blot testing of DSCR1 antibody (1:500) and endothelial cell lysate. Data courtesy of Dr. Katherine Healey, NWCRF Institute, School of Biological Sciences, University of Wales Bangor.

Description

DSCR1 (calcipressin 1) interacts with calcineurin A and inhibits calcineurin-dependent signaling pathways, possibly affecting central nervous system development. The gene for this protein is located in the minimal candidate region for the Down syndrome phenotype, and is overexpressed in the brain of Down syndrome fetuses. Chronic overexpression of this gene may lead to neurofibrillary tangles such as those associated with Alzheimer disease.

Application Notes

Titration of the DSCR1 antibody may be required due to differences in protocols and secondary/substrate sensitivity.

Immunogen

A portion of amino acids 75-104 from the human protein was used as the immunogen for this DSCR1 antibody.

Storage

Aliquot the DSCR1 antibody and store frozen at -20°C or colder. Avoid repeated freeze-thaw cycles.