

DLX5 Antibody (F54690)

Catalog No.	Formulation	Size
F54690-0.4ML	In 1X PBS, pH 7.4, with 0.09% sodium azide	0.4 ml
F54690-0.08ML	In 1X PBS, pH 7.4, with 0.09% sodium azide	0.08 ml

[Bulk quote request](#)

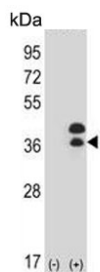
Availability	1-3 business days
Species Reactivity	Human
Format	Purified
Host	Rabbit
Clonality	Polyclonal (rabbit origin)
Isotype	Rabbit Ig
Purity	Antigen affinity purified
UniProt	P56178
Applications	Immunohistochemistry (FFPE) : 1:25 Western Blot : 1:500-1:2000
Limitations	This DLX5 antibody is available for research use only.

kDa
95
72
55
36
28
17

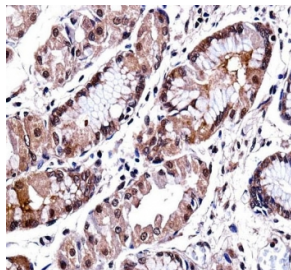
Western blot testing of mouse heart tissue lysate with DLX5 antibody. Predicted molecular weight ~32 kDa.

kDa
72
55
36
28
17

Western blot testing of human HL60 lysate with DLX5 antibody. Predicted molecular weight ~32 kDa.



Western blot testing of 1) non-transfected and 2) transfected 293 cell lysate with DLX5 antibody. Predicted molecular weight ~32 kDa.



IHC testing of FFPE human stomach tissue with DLX5 antibody. HIER: steam section in pH6 citrate buffer for 20 min and allow to cool prior to staining.

Description

This gene encodes a member of a homeobox transcription factor gene family similar to the *Drosophila* distal-less gene. The encoded protein may play a role in bone development and fracture healing. Mutation in this gene, which is located in a tail-to-tail configuration with another member of the family on the long arm of chromosome 7, may be associated with split-hand/split-foot malformation.

Application Notes

The stated application concentrations are suggested starting points. Titration of the DLX5 antibody may be required due to differences in protocols and secondary/substrate sensitivity.

Immunogen

A portion of amino acids 100-128 from the human protein was used as the immunogen for the DLX5 antibody.

Storage

Aliquot the DLX5 antibody and store frozen at -20°C or colder. Avoid repeated freeze-thaw cycles.