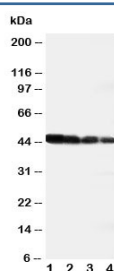


DLL3 Antibody (R31012)

Catalog No.	Formulation	Size
R31012	0.5mg/ml if reconstituted with 0.2ml sterile DI water	100 ug

[Bulk quote request](#)

Availability	1-3 business days
Species Reactivity	Human
Format	Antigen affinity purified
Host	Rabbit
Clonality	Polyclonal (rabbit origin)
Isotype	Rabbit IgG
Purity	Antigen affinity
Buffer	Lyophilized from 1X PBS with 2.5% BSA and 0.025% sodium azide/thimerosal
UniProt	Q9NYJ7
Applications	Western Blot : 0.5-1ug/ml
Limitations	This DLL3 antibody is available for research use only.



Western blot testing of DLL3 antibody and recombinant human protein; Lane 1: 10ng; 2: 5ng; 3: 2.5ng; 4: 1.25ng

Description

Delta-like 3 is a protein which in humans is encoded by the DLL3 gene. This gene encodes a member of the delta protein ligand family. This family functions as Notch ligands that are characterized by a DSL domain, EGF repeats, and a transmembrane domain. Mutation in the mouse delta-like 3 gene, which is homologous to the Notch-ligand delta in Drosophila, results in the mouse 'pudgy' phenotype. The human gene was identified within a critical interval, mapped in two consanguineous Arab-Israeli and Pakistani SCDO1 pedigrees, of 7.8 cM at 19q13.1-q13.3 between D19S570 and D19S908(Bulman et al., 2000). Dunwoodie et al.(1997) presented results suggesting that mouse DLL3 may complement the function of other delta homologs during early pattern formation in the mouse embryo. In humans, the fact that

mutations in genes required for oscillation, such as DLL3, result in abnormal segmentation of the vertebral column suggests that the segmentation clock also acts during human embryonic development. This residue is highly conserved in Delta proteins from Drosophila to humans, and the substitution of a charged polar for a nonpolar residue may disrupt the conformation of the DLL3 protein.

Application Notes

The stated application concentrations are suggested starting amounts. Titration of the DLL3 antibody may be required due to differences in protocols and secondary/substrate sensitivity.

Immunogen

Amino acids 599-618 (RAGQRQHLLFPYPSSILSVK-human) were used as the immunogen for this DLL3 antibody.

Storage

After reconstitution, the DLL3 antibody can be stored for up to one month at 4°C. For long-term, aliquot and store at -20°C. Avoid repeated freezing and thawing.