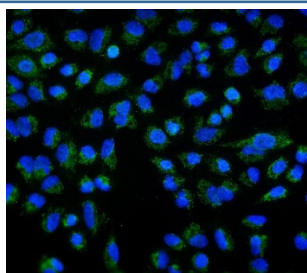


## DLL1 Antibody (RQ5690)

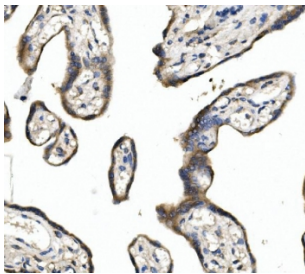
Catalog No.	Formulation	Size
RQ5690	0.5mg/ml if reconstituted with 0.2ml sterile DI water	100 ug

**Bulk quote request**

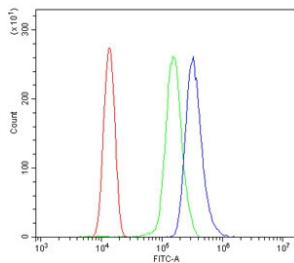
<b>Availability</b>	1-3 business days
<b>Species Reactivity</b>	Human, Mouse, Rat, Monkey
<b>Format</b>	Antigen affinity purified
<b>Host</b>	Rabbit
<b>Clonality</b>	Polyclonal
<b>Isotype</b>	Rabbit IgG
<b>Purity</b>	Affinity purified
<b>Buffer</b>	Lyophilized from 1X PBS with 2% Trehalose and 0.025% sodium azide
<b>UniProt</b>	O00548
<b>Applications</b>	Western Blot : 0.5-1ug/ml Immunohistochemistry : 1-2ug/ml Immunofluorescence : 2-4ug/ml Flow Cytometry : 1-3ug/million cells Direct ELISA : 0.1-0.5ug/ml
<b>Limitations</b>	This DLL1 antibody is available for research use only.



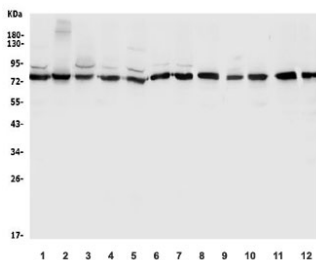
Immunofluorescent staining of FFPE human A549 cells with DLL1 antibody (green) and DAPI nuclear stain (blue). HIER: steam section in pH6 citrate buffer for 20 min.



IHC staining of FFPE human placenta with DLL1 antibody. HIER: boil tissue sections in pH8 EDTA for 20 min and allow to cool before testing.



Flow cytometry testing of human ThP-1 cells with DLL1 antibody at 1ug/million cells (blocked with goat sera); Red=cells alone, Green=isotype control, Blue= DLL1 antibody.



Western blot testing of 1) human HeLa, 2) monkey COS-7 and human 3) Jurkat, 4) Raji, 5) SW620, 6) HepG2, 7) U-2 OS, 8) rat heart, 9) rat C6, 10) mouse heart, 11) mouse Neuro-2a, 12) mouse RAW264.7 lysate with DLL1 antibody. Predicted molecular weight ~78 kDa.

## Description

DLL1 is a human homolog of the Notch Delta ligand and is a member of the delta/serrate/jagged family. It plays a role in mediating cell fate decisions during hematopoiesis. It may play a role in cell-to-cell communication. This gene is mapped to chromosome 6q27.

## Application Notes

Optimal dilution of the DLL1 antibody should be determined by the researcher.

## Immunogen

Recombinant human protein (amino acids Q18-K239) was used as the immunogen for the DLL1 antibody.

## Storage

After reconstitution, the DLL1 antibody can be stored for up to one month at 4oC. For long-term, aliquot and store at -20oC. Avoid repeated freezing and thawing.

