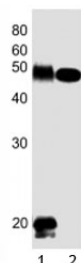


## DLK1 Antibody (F52920)

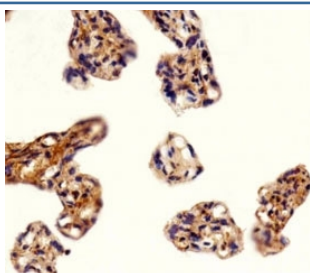
Catalog No.	Formulation	Size
F52920-0.4ML	In 1X PBS, pH 7.4, with 0.09% sodium azide	0.4 ml
F52920-0.08ML	In 1X PBS, pH 7.4, with 0.09% sodium azide	0.08 ml

[Bulk quote request](#)

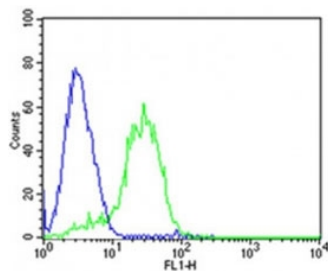
<b>Availability</b>	1-3 business days
<b>Species Reactivity</b>	Human, Mouse
<b>Format</b>	Antigen affinity purified
<b>Host</b>	Rabbit
<b>Clonality</b>	Polyclonal (rabbit origin)
<b>Isotype</b>	Rabbit Ig
<b>Purity</b>	Antigen affinity
<b>UniProt</b>	P80370
<b>Applications</b>	Western Blot : 1:1000 IHC (Paraffin) : 1:25 Flow Cytometry : 1:25
<b>Limitations</b>	This DLK1 antibody is available for research use only.



Western blot testing of DLK1 antibody at 1:1000 dilution. Lane 1: human placenta lysate; 2: mouse skeletal muscle lysate; Observed molecular weight 41~60 kDa depending on glycosylation level.



Immunohistochemical analysis of paraffin-embedded human placenta section using DLK1 antibody



Flow cytometric analysis of HepG2 cells using DLK1 antibody (green) compared to an isotype control (blue). Ab was diluted at 1:25 dilution.

## Description

May have a role in neuroendocrine differentiation.

## Application Notes

Titration of the DLK1 antibody may be required due to differences in protocols and secondary/substrate sensitivity.

## Immunogen

This DLK1 antibody was produced from a rabbit immunized with a KLH conjugated synthetic peptide between 368-402 amino acids from the C-terminal region of human DLK1.

## Storage

Aliquot the DLK1 antibody and store frozen at -20oC or colder. Avoid repeated freeze-thaw cycles.