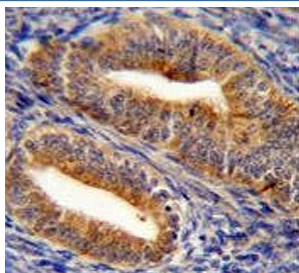


Dipeptidyl peptidase 3 Antibody / DPP3 (F54584)

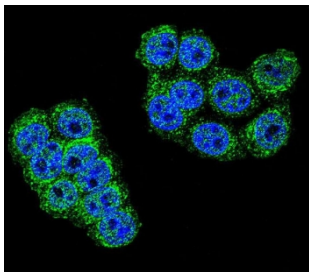
Catalog No.	Formulation	Size
F54584-0.4ML	In 1X PBS, pH 7.4, with 0.09% sodium azide	0.4 ml
F54584-0.08ML	In 1X PBS, pH 7.4, with 0.09% sodium azide	0.08 ml

[Bulk quote request](#)

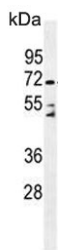
Availability	1-3 business days
Species Reactivity	Human
Format	Purified
Host	Rabbit
Clonality	Polyclonal (rabbit origin)
Isotype	Rabbit Ig
Purity	Antigen affinity purified
UniProt	Q9NY33
Localization	Cytoplasmic
Applications	Immunofluorescence : 1:25 Flow Cytometry : 1:25 (1x10 ⁶ cells) Western Blot : 1:500-1:2000 Immunohistochemistry (FFPE) : 1:25
Limitations	This Dipeptidyl peptidase 3 antibody is available for research use only.



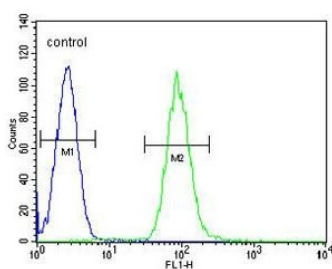
IHC testing of FFPE human uterus tissue with Dipeptidyl peptidase 3 antibody. HIER: steam section in pH6 citrate buffer for 20 min and allow to cool prior to staining.



Immunofluorescent staining of human HeLa cells with Dipeptidyl peptidase 3 antibody (green) and DAPI nuclear stain (blue).



Western blot testing of human HL60 cell lysate with Dipeptidyl peptidase 3 antibody. Expected molecular weight ~83 kDa and ~70 kDa (DPP3-BBS1).



Flow cytometry testing of human HL60 cells with Dipeptidyl peptidase 3 antibody; Blue=isotype control, Green= Dipeptidyl peptidase 3 antibody.

Description

This gene encodes a protein that is a member of the M49 family of metallopeptidases. This cytoplasmic protein binds a single zinc ion with its zinc-binding motif (HELLGH) and has post-proline dipeptidyl aminopeptidase activity, cleaving Xaa-Pro dipeptides from the N-termini of proteins. Increased activity of this protein is associated with endometrial and ovarian cancers. Alternate transcriptional splice variants have been characterized.

Application Notes

The stated application concentrations are suggested starting points. Titration of the Dipeptidyl peptidase 3 antibody may be required due to differences in protocols and secondary/substrate sensitivity.

Immunogen

A portion of amino acids 583-612 from the human protein was used as the immunogen for the Dipeptidyl peptidase 3 antibody.

Storage

Aliquot the Dipeptidyl peptidase 3 antibody and store frozen at -20°C or colder. Avoid repeated freeze-thaw cycles.

