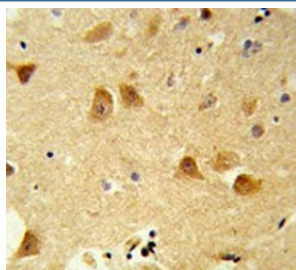


Derlin 1 Antibody / DERL1 (F54998)

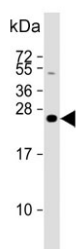
Catalog No.	Formulation	Size
F54998-0.4ML	In 1X PBS, pH 7.4, with 0.09% sodium azide	0.4 ml
F54998-0.08ML	In 1X PBS, pH 7.4, with 0.09% sodium azide	0.08 ml

Bulk quote request

Availability	1-3 business days
Species Reactivity	Human, Mouse
Format	Purified
Clonality	Polyclonal (rabbit origin)
Isotype	Rabbit Ig
Purity	Antigen affinity purified
UniProt	Q9BUN8
Localization	Cytoplasmic
Applications	Flow Cytometry : 1:10-1:50 (1x10 ⁶ cells) Immunohistochemistry (FFPE) : 1:50-1:100 Western Blot : 1:500-1:1000
Limitations	This Derlin 1 antibody is available for research use only.



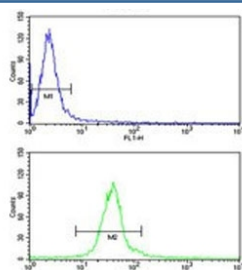
IHC testing of FFPE human brain tissue with Derlin 1 antibody. HIER: steam section in pH6 citrate buffer for 20 min and allow to cool prior to staining.



Western blot testing of human SK-BR-3 cell lysate with Derlin 1 antibody. Predicted molecular weight ~29 kDa.

kDa
72
55
36
28
17

Western blot testing of mouse NIH 3T3 cell lysate with Derlin 1 antibody. Predicted molecular weight ~29 kDa.



Flow cytometry testing of human HeLa cells with Derlin 1 antibody; Blue=isotype control, Green= Derlin 1 antibody.

Description

Functional component of endoplasmic reticulum-associated degradation (ERAD) for misfolded luminal proteins. DERL1 may act by forming a channel that allows the retrotranslocation of misfolded proteins into the cytosol where they are ubiquitinated and degraded by the proteasome. It may mediate the interaction between VCP and the degradation substrate. In case of infection by cytomegaloviruses, it plays a central role in the export from the ER and subsequent degradation of MHC class I heavy chains via its interaction with US11 viral protein, which recognizes and associates with MHC class I heavy chains. Also participates in the degradation process of misfolded cytomegalovirus US2 protein.

Application Notes

The stated application concentrations are suggested starting points. Titration of the Derlin 1 antibody may be required due to differences in protocols and secondary/substrate sensitivity.

Immunogen

A portion of amino acids 224-251 from the human protein was used as the immunogen for the Derlin 1 antibody.

Storage

Aliquot the Derlin 1 antibody and store frozen at -20oC or colder. Avoid repeated freeze-thaw cycles.