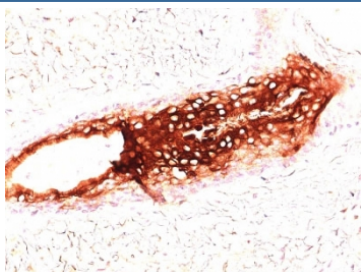


Cytokeratin 17 Antibody [clone SPM560] (V9059)

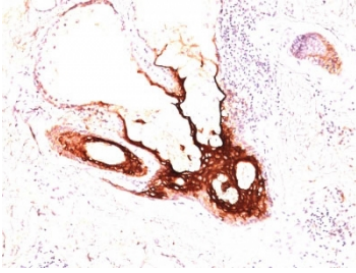
Catalog No.	Formulation	Size
V9059-100UG	0.2 mg/ml in 1X PBS with 0.1 mg/ml BSA (US sourced) and 0.05% sodium azide	100 ug
V9059-20UG	0.2 mg/ml in 1X PBS with 0.1 mg/ml BSA (US sourced) and 0.05% sodium azide	20 ug
V9059SAF-100UG	1 mg/ml in 1X PBS; BSA free, sodium azide free	100 ug
V9059IHC-7ML	Prediluted in 1X PBS with 0.1 mg/ml BSA (US sourced) and 0.05% sodium azide; *For IHC use only*	7 ml

[Bulk quote request](#)

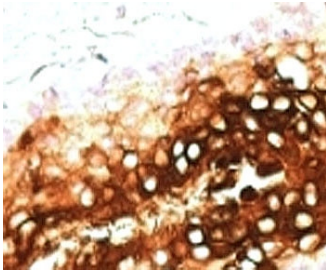
Availability	1-3 business days
Species Reactivity	Human
Format	Purified
Host	Mouse
Clonality	Monoclonal (mouse origin)
Isotype	Mouse IgG2b, kappa
Clone Name	SPM560
Purity	Protein G affinity chromatography
UniProt	Q04695
Localization	Cytoplasmic
Applications	Western Blot : 1-2ug/ml Flow Cytometry : 1-2ug/10 ⁶ cells Immunohistochemistry (FFPE) : 1-2ug/ml for 30 min at RT
Limitations	This Cytokeratin 17 antibody is available for research use only.



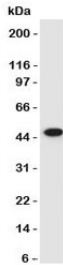
IHC: Formalin-fixed, paraffin-embedded human skin stained with CK17 antibody (clone SPM560).



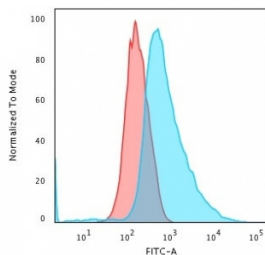
IHC: Formalin-fixed, paraffin-embedded human skin stained with CK17 antibody (clone SPM560).



IHC: Formalin-fixed, paraffin-embedded human skin stained with CK17 antibody (clone SPM560).



Western blot of HeLa lysate using CK17 antibody (clone SPM560).



Flow cytometry testing of PFA fixed human HeLa cells with Cytokeratin 17 antibody (clone SPM560); Red=isotype control, Blue= Cytokeratin 17 antibody.

Description

Cytokeratin 17 (CK17) is a member of the Cytokeratin subfamily of intermediate filament proteins (IF's). It is unique in that it is normally expressed in the basal cells of complex epithelia but not in stratified or simple epithelia. CK17 is expressed in the nail bed, hair follicle, sebaceous glands and other epidermal appendages. Antibody to CK17 is an excellent tool to distinguish myoepithelial cells from luminal epithelium of various glands such as mammary, sweat and salivary. CK17 is expressed in epithelial cells of various origins, such as bronchial epithelial cells and skin appendages. It may be considered an epithelial stem cell marker because CK17 Ab marks basal cell differentiation. CK17 can be useful when included in a panel of antibodies against TTF-1, napsin A, CK5&6, p63, and SOX-2 for diagnostic differentiation between lung adenocarcinoma (LADC) and lung squamous cell carcinoma (SCLC), especially for poorly-differentiated lung carcinoma. CK17 is expressed in SCLC much higher than in LADC. In breast carcinomas, approximately 20% of patients show no expression of ER, PR and Her2, which are defined as triple negative tumor. Eighty-five percent of the triple negative breast carcinomas immunoreact with basal cytokeratins including anti-CK17. Also important is that cases of triple negative breast carcinoma with expression of CK17 show an aggressive clinical course. The histologic differentiation of ampullary cancer, intestinal vs. pancreatobiliary, is very important for treatment. Usually anti-CK17 and anti-MUC1 immunoreactivity represents pancreatobiliary subtype whereas anti-MUC2 and anti-CDX-2 positivity defines intestinal subtype.

Application Notes

The optimal dilution of the Cytokeratin 17 antibody for each application should be determined by the researcher.

1. Staining of formalin-fixed tissues requires boiling tissue sections in pH 9 10mM Tris with 1mM EDTA for 10-20 min followed by cooling at RT for 20 minutes.
2. The prediluted format is supplied in a dropper bottle and is optimized for use in IHC. After epitope retrieval step (if required), drip mAb solution onto the tissue section and incubate at RT for 30 min.

Immunogen

A cytoskeletal fraction of rat colon epithelium was used as the immunogen for this Cytokeratin 17 antibody.

Storage

Store the Cytokeratin 17 antibody at 2-8oC (with azide) or aliquot and store at -20oC or colder (without azide).