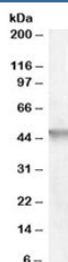


## Cytohesin 2 Antibody (R33732)

Catalog No.	Formulation	Size
R33732-100UG	0.5 mg/ml in 1X TBS, pH7.3, with 0.5% BSA (US sourced) and 0.02% sodium azide	100 ug

[Bulk quote request](#)

Availability	1-3 business days
Species Reactivity	Human, Rat
Predicted Reactivity	Dog, Mouse
Format	Antigen affinity purified
Clonality	Polyclonal (goat origin)
Isotype	Goat Ig
Purity	Antigen affinity
Gene ID	9266
Applications	Western Blot : 0.5-1.5ug/ml ELISA (peptide) LOD : 1:32000
Limitations	This Cytohesin 2 antibody is available for research use only.



Western blot testing of human cerebellum lysate with Cytohesin 2 antibody at 0.5ug/ml.  
Predicted molecular weight: ~47kDa.

## Description

Additional name(s) for this target protein: Pleckstrin homology, Sec7 and coiled-coil domains 2; ARNO; PS CD2

## Application Notes

Optimal dilution of the Cytohesin 2 antibody should be determined by the researcher.

## Immunogen

Amino acids EDGVYEPPDLTP were used as the immunogen for this Cytohesin 2 antibody.

## **Storage**

Aliquot and store the Cytohesin 2 antibody at -20oC.