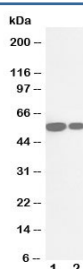


Cytochrome P450 2E1 Antibody (R31009)

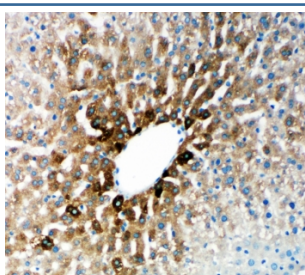
Catalog No.	Formulation	Size
R31009	0.5mg/ml if reconstituted with 0.2ml sterile DI water	100 ug

Bulk quote request

Availability	1-3 business days
Species Reactivity	Mouse, Rat
Format	Antigen affinity purified
Host	Rabbit
Clonality	Polyclonal (rabbit origin)
Isotype	Rabbit IgG
Purity	Antigen affinity
Buffer	Lyophilized from 1X PBS with 2.5% BSA and 0.025% sodium azide/thimerosal
UniProt	Q05421
Applications	Western Blot : 0.5-1ug/ml IHC (FFPE) : 0.5-1ug/ml
Limitations	This CYP2E1 antibody is available for research use only.



Western blot testing of Cytochrome P450 2E1 antibody and Lane 1: rat liver; 2: mouse liver tissue lysate. Predicted molecular weight ~56kDa.



IHC-P: Cytochrome P450 2E1 antibody testing of rat liver tissue

Description

Cytochrome P450 2E1, also known as P450IIE1, is a member of the P450IIE subfamily which is ethanol-inducible. It has at least one gene which is mapped to 10q24.3-qter, and a second is likely in rat and in man. Both the rat and human proteins encoded by this gene contain 493 amino acids and calculated molecular masses of 56,634 and 56,916 daltons, respectively. In addition, genetic polymorphisms in the 5-prime flanking region of the human P450IIE1 gene affected its binding of transacting factor and changed its transcriptional regulation, which may lead to interindividual differences of microsomal drug oxidation activity. Cytochrome P450 2E1 is an important enzyme for the catalysis of the conversion of ethanol to acetaldehyde and to acetate in humans, and it is also involved in the metabolism of nitrosamines. Due to the possible correlation of P450IIE1 genes with malignancy, clinical studies of RFLP patterns of these genes in cancer may be useful.

Application Notes

The stated application concentrations are suggested starting amounts. Titration of the Cytochrome P450 2E1 antibody may be required due to differences in protocols and secondary/substrate sensitivity.

Immunogen

An amino acid sequence from the N-terminus of mouse CYP2E1 (KNEFSGRGDIPVFQEYKNK) was used as the immunogen for this Cytochrome P450 2E1 antibody (100% rat homology).

Storage

After reconstitution, the Cytochrome P450 2E1 antibody can be stored for up to one month at 4°C. For long-term, aliquot and store at -20°C. Avoid repeated freezing and thawing.