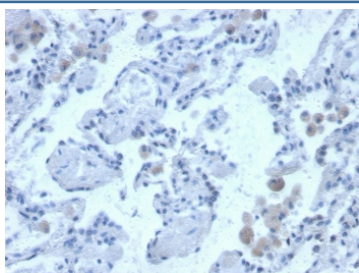


## Cystatin B Antibody [clone CPTC-CSTB-3] (V8489)

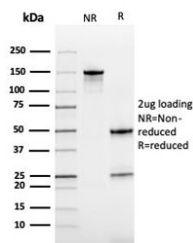
| Catalog No.    | Formulation  | Size   |
|----------------|--|--------|
| V8489-100UG    | 0.2 mg/ml in 1X PBS with 0.1 mg/ml BSA (US sourced) and 0.05% sodium azide | 100 ug |
| V8489-20UG     | 0.2 mg/ml in 1X PBS with 0.1 mg/ml BSA (US sourced) and 0.05% sodium azide | 20 ug  |
| V8489SAF-100UG | 1 mg/ml in 1X PBS; BSA free, sodium azide free                             | 100 ug |

**Bulk quote request**

|                           |  |
|---------------------------|--|
| <b>Availability</b>       | 1-3 business days  |
| <b>Species Reactivity</b> | Human  |
| <b>Format</b>             | Purified   |
| <b>Clonality</b>          | Monoclonal (mouse origin)  |
| <b>Isotype</b>            | Mouse IgG1, kappa  |
| <b>Clone Name</b>         | CPTC-CSTB-3  |
| <b>Purity</b>             | Protein G affinity chromatography  |
| <b>UniProt</b>            | P04080   |
| <b>Localization</b>       | Cytoplasm and nucleus  |
| <b>Applications</b>       | Western Blot : 1-2ug/ml<br>Immunohistochemistry (FFPE) : 1-2ug/ml for 30 minutes at RT |
| <b>Limitations</b>        | This Cystatin B antibody is available for research use only.                           |



IHC staining of FFPE human lung with Cystatin B antibody. HIER: boil tissue sections in pH 9 10mM Tris with 1mM EDTA for 20 min and allow to cool before testing.



SDS-PAGE analysis of purified, BSA-free Cystatin B antibody as confirmation of integrity and purity.

## Description

Cystatin A (also designated STF1, STFA, stefin A or cystatin AS) and cystatin B (also designated PME, CST6, STFB, CPI-B, stefin B and liver thiol proteinase inhibitor) are thiol protease inhibitors that form complexes with papain and the cathepsins B, H, and L. cystatin A, a cytoplasmic protein, is one of the precursor proteins of the cornified cell envelope in keratinocytes and plays a role in epidermal development and maintenance. cystatin B protects against intracellular proteases leaking out of lysosomes and is primarily expressed in heart, liver and kidney.

## Application Notes

Optimal dilution of the Cystatin B antibody should be determined by the researcher.

## Immunogen

Recombinant full-length human Cystatin B protein was used as the immunogen for the Cystatin B antibody.

## Storage

Store the Cystatin B antibody at 2-8oC (with azide) or aliquot and store at -20oC or colder (without azide).