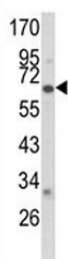


CYP2F1 Antibody (F50860)

Catalog No.	Formulation	Size
F50860-0.4ML	In 1X PBS, pH 7.4, with 0.09% sodium azide	0.4 ml
F50860-0.08ML	In 1X PBS, pH 7.4, with 0.09% sodium azide	0.08 ml

[Bulk quote request](#)

Availability	1-3 business days
Species Reactivity	Human
Predicted Reactivity	Rat
Format	Purified
Clonality	Polyclonal (rabbit origin)
Isotype	Rabbit Ig
Purity	Purified
UniProt	P24903
Applications	Western Blot : 1:1000
Limitations	This CYP2F1 antibody is available for research use only.



Western blot analysis of CYP2F1 antibody and A2058 lysate.

Description

CYP2F1 is a member of the cytochrome P450 superfamily of enzymes. The cytochrome P450 proteins are monooxygenases which catalyze many reactions involved in drug metabolism and synthesis of cholesterol, steroids and other lipids. This protein localizes to the endoplasmic reticulum and is known to dehydrogenate 3-methylindole, an endogenous toxin derived from the fermentation of tryptophan, as well as xenobiotic substrates such as naphthalene and ethoxycoumarin.

Application Notes

Titration of the CYP2F1 antibody may be required due to differences in protocols and secondary/substrate sensitivity.

Immunogen

A portion of amino acids 395-424 from the human protein was used as the immunogen for this CYP2F1 antibody.

Storage

Aliquot the CYP2F1 antibody and store frozen at -20oC or colder. Avoid repeated freeze-thaw cycles.