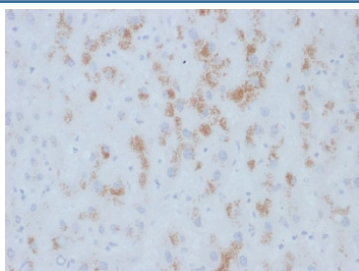


CYP2E1 Antibody / Cytochrome P450 [clone M12P4H2] (V3742)

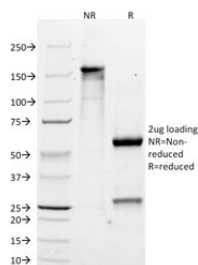
Catalog No.	Formulation	Size
V3742-100UG	0.2 mg/ml in 1X PBS with 0.1 mg/ml BSA (US sourced) and 0.05% sodium azide	100 ug
V3742-20UG	0.2 mg/ml in 1X PBS with 0.1 mg/ml BSA (US sourced) and 0.05% sodium azide	20 ug
V3742SAF-100UG	1 mg/ml in 1X PBS; BSA free, sodium azide free	100 ug
V3742IHC-7ML	Prediluted in 1X PBS with 0.1 mg/ml BSA (US sourced) and 0.05% sodium azide; *For IHC use only*	7 ml

[Bulk quote request](#)

Availability	1-3 business days
Species Reactivity	Human
Format	Purified
Host	Mouse
Clonality	Monoclonal (mouse origin)
Isotype	Mouse IgG1, kappa
Clone Name	M12P4H2
Purity	Protein G affinity chromatography
UniProt	P05181
Localization	Cytoplasmic (ER)
Applications	Immunohistochemistry (FFPE) : 0.1-0.2ug/ml for 30 min at RT
Limitations	This CYP2E1 antibody is available for research use only.



IHC testing of FFPE human hepatic carcinoma with TdT antibody (clone M12P4H2). Required HIER: boil tissue sections in 10mM citrate buffer, pH6, for 10-20 min followed by cooling at RT for 20 min.



SDS-PAGE analysis of purified, BSA-free CYP2E1 antibody (clone M12P4H2) as confirmation of integrity and purity.

Description

This gene encodes a member of the cytochrome P450 superfamily of enzymes. The cytochrome P450 proteins are mono-oxygenases, which catalyze many reactions involved in drug metabolism and synthesis of cholesterol, steroids and other lipids. This protein localizes to the endoplasmic reticulum and is induced by ethanol, the diabetic state, and starvation. The enzyme metabolizes both endogenous substrates, such as ethanol, acetone, and acetal, as well as exogenous substrates including benzene, carbon tetrachloride, ethylene glycol, and nitrosamines, which are pre-mutagens found in cigarette smoke. Due to its many substrates, this enzyme may be involved in such varied processes as gluconeogenesis, hepatic cirrhosis, diabetes, and cancer.

Application Notes

Optimal dilution of the CYP2E1 antibody to be determined by the researcher.

1. The prediluted format is supplied in a dropper bottle and is optimized for use in IHC. After epitope retrieval step (if required), drip mAb solution onto the tissue section and incubate at RT for 30 min.

Immunogen

The C-terminal amino acid sequence HIGFGCIPPR was used as the immunogen for the CYP2E1 antibody.

Storage

Store the CYP2E1 antibody at 2-8°C (with azide) or aliquot and store at -20°C or colder (without azide).