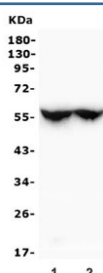


CYP2C19 Antibody (RQ5251)

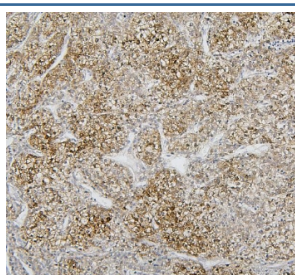
Catalog No.	Formulation	Size
RQ5251	0.5mg/ml if reconstituted with 0.2ml sterile DI water	100 ug

Bulk quote request

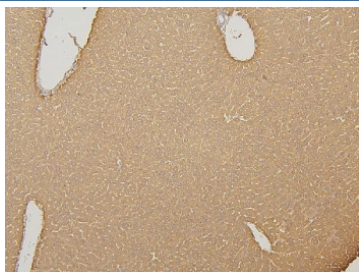
Availability	1-3 business days
Species Reactivity	Human, Mouse, Rat
Format	Antigen affinity purified
Host	Rabbit
Clonality	Polyclonal (rabbit origin)
Isotype	Rabbit IgG
Purity	Affinity purified
Buffer	Lyophilized from 1X PBS with 2% Trehalose and 0.025% sodium azide
UniProt	P33261
Applications	Western Blot : 0.1-0.5ug/ml Immunohistochemistry (FFPE) : 1-2ug/ml
Limitations	This CYP2C19 antibody is available for research use only.



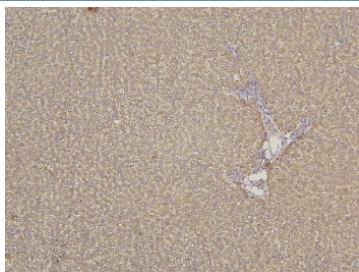
Western blot testing of different lots of rat liver lysate with CYP2C19 antibody. Predicted molecular weight ~56 kDa.



IHC staining of FFPE human liver cancer with CYP2C19 antibody. HIER: boil tissue sections in pH8 EDTA for 20 min and allow to cool before testing.



IHC staining of FFPE mouse liver with CYP2C19 antibody. HIER: boil tissue sections in pH8 EDTA for 20 min and allow to cool before testing.



IHC staining of FFPE rat liver with CYP2C19 antibody. HIER: boil tissue sections in pH8 EDTA for 20 min and allow to cool before testing.

Description

Cytochrome P450 2C19 (abbreviated CYP2C19) encodes a member of the cytochrome P450 superfamily of enzymes. The cytochrome P450 proteins are monooxygenases which catalyze many reactions involved in drug metabolism and synthesis of cholesterol, steroids and other lipids. This protein localizes to the endoplasmic reticulum and is known to metabolize many xenobiotics, including the anticonvulsive drug mephenytoin, omeprazole, diazepam and some barbiturates. Polymorphism within this gene is associated with variable ability to metabolize mephenytoin, known as the poor metabolizer and extensive metabolizer phenotypes. The gene is located within a cluster of cytochrome P450 genes on chromosome 10q24.

Application Notes

Optimal dilution of the CYP2C19 antibody should be determined by the researcher.

Immunogen

Amino acids QNQQSEFTIENLVITAADLLGAGTETT from the human protein were used as the immunogen for the CYP2C19 antibody.

Storage

Store the CYP2C19 antibody at -20oC.