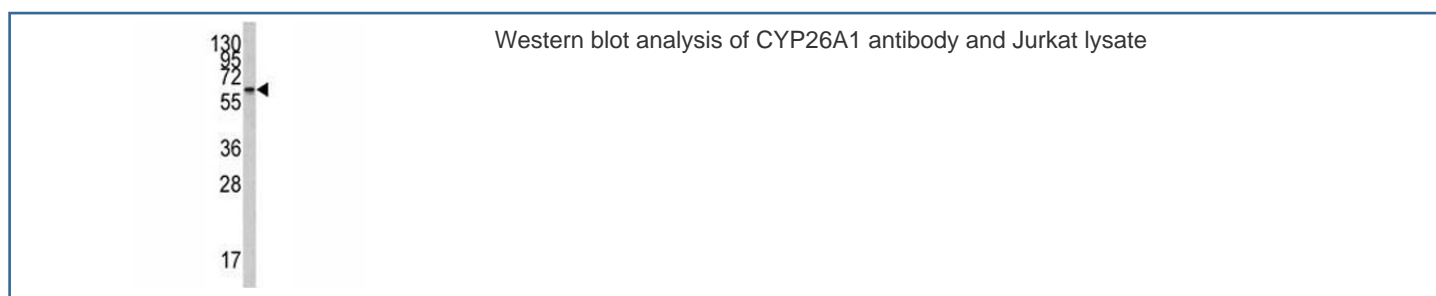


## CYP26A1 Antibody (F40123)

Catalog No.	Formulation	Size
F40123-0.4ML	In 1X PBS, pH 7.4, with 0.09% sodium azide	0.4 ml
F40123-0.08ML	In 1X PBS, pH 7.4, with 0.09% sodium azide	0.08 ml

[Bulk quote request](#)

<b>Availability</b>	1-3 business days
<b>Species Reactivity</b>	Human
<b>Format</b>	Purified
<b>Host</b>	Rabbit
<b>Clonality</b>	Polyclonal (rabbit origin)
<b>Isotype</b>	Rabbit Ig
<b>Purity</b>	Purified
<b>UniProt</b>	O43174
<b>Applications</b>	Western Blot : 1:1000
<b>Limitations</b>	This CYP26A1 antibody is available for research use only.



## Description

CYP26A1 is a member of the cytochrome P450 superfamily of enzymes. The cytochrome P450 proteins are monooxygenases which catalyze many reactions involved in drug metabolism and synthesis of cholesterol, steroids and other lipids. This endoplasmic reticulum protein acts on retinoids, including all-trans-retinoic acid (RA), with both 4-hydroxylation and 18-hydroxylation activities. This enzyme regulates the cellular level of retinoic acid which is involved in regulation of gene expression in both embryonic and adult tissues.

## Application Notes

Titration of the CYP26A1 antibody may be required due to differences in protocols and secondary/substrate sensitivity.

## **Immunogen**

A portion of amino acids 118-147 from the human protein was used as the immunogen for this CYP26A1 antibody.

## **Storage**

Aliquot the CYP26A1 antibody and store frozen at -20oC or colder. Avoid repeated freeze-thaw cycles.