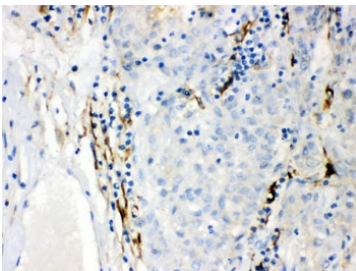


## CYP1B1 Antibody (R32253)

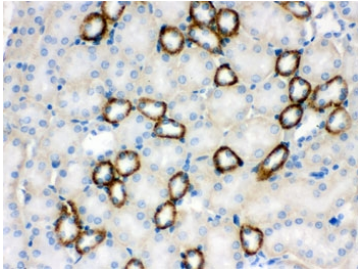
Catalog No.	Formulation	Size
R32253	0.5mg/ml if reconstituted with 0.2ml sterile DI water	100 ug

[Bulk quote request](#)

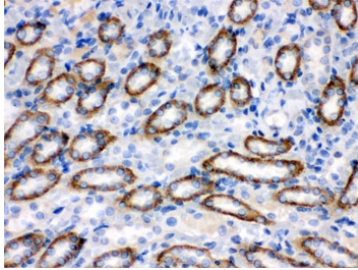
<b>Availability</b>	1-3 business days
<b>Species Reactivity</b>	Human, Mouse, Rat
<b>Format</b>	Antigen affinity purified
<b>Host</b>	Rabbit
<b>Clonality</b>	Polyclonal (rabbit origin)
<b>Isotype</b>	Rabbit IgG
<b>Purity</b>	Antigen affinity
<b>Buffer</b>	Lyophilized from 1X PBS with 2.5% BSA and 0.025% sodium azide
<b>UniProt</b>	Q16678
<b>Localization</b>	Cytoplasmic, membrane
<b>Applications</b>	Western Blot : 0.1-0.5ug/ml IHC (FFPE) : 0.5-1ug/ml Flow Cytometry : 1-3ug/10 <sup>6</sup> cells
<b>Limitations</b>	This CYP1B1 antibody is available for research use only.



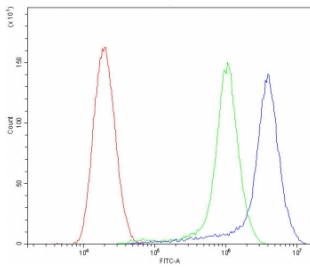
IHC testing of FFPE human liver cancer tissue with CYP1B1 antibody. HIER: Boil the paraffin sections in pH 6, 10mM citrate buffer for 20 minutes and allow to cool prior to staining.



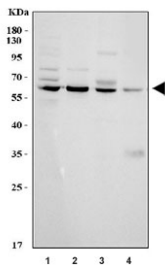
IHC testing of FFPE mouse kidney with CYP1B1 antibody. HIER: Boil the paraffin sections in pH 6, 10mM citrate buffer for 20 minutes and allow to cool prior to staining.



IHC testing of FFPE rat kidney with CYP1B1 antibody. HIER: Boil the paraffin sections in pH 6, 10mM citrate buffer for 20 minutes and allow to cool prior to staining.



Flow cytometry testing of human SiHa cells with CYP1B1 antibody at 1ug/10<sup>6</sup> cells (blocked with goat sera); Red=cells alone, Green=isotype control, Blue= CYP1B1 antibody.



Western blot testing of 1) human MCF7, 2) human PC-3, 3) rat heart and 4) mouse heart tissue lysate with CYP1B1 antibody. Predicted molecular weight ~61 kDa.

## Description

Cytochrome P450 1B1 is an enzyme that in humans is encoded by the CYP1B1 gene. CYP1B1 belongs to the the cytochrome P450 superfamily of enzymes. The cytochrome P450 proteins are monooxygenases which catalyze many reactions involved in drug metabolism and synthesis of cholesterol, steroids and other lipids. The enzyme encoded by this gene localizes to the endoplasmic reticulum and metabolizes procarcinogens such as polycyclic aromatic hydrocarbons and 17beta-estradiol. Mutations in this gene have been associated with primary congenital glaucoma; therefore it is thought that the enzyme also metabolizes a signaling molecule involved in eye development, possibly a steroid.

## Application Notes

Optimal dilution of the CYP1B1 antibody should be determined by the researcher.

## Immunogen

Amino acids 255-480 of human CYP1B1 were used as the immunogen for the CYP1B1 antibody.

## Storage

After reconstitution, the CYP1B1 antibody can be stored for up to one month at 4oC. For long-term, aliquot and store at

-20oC. Avoid repeated freezing and thawing.