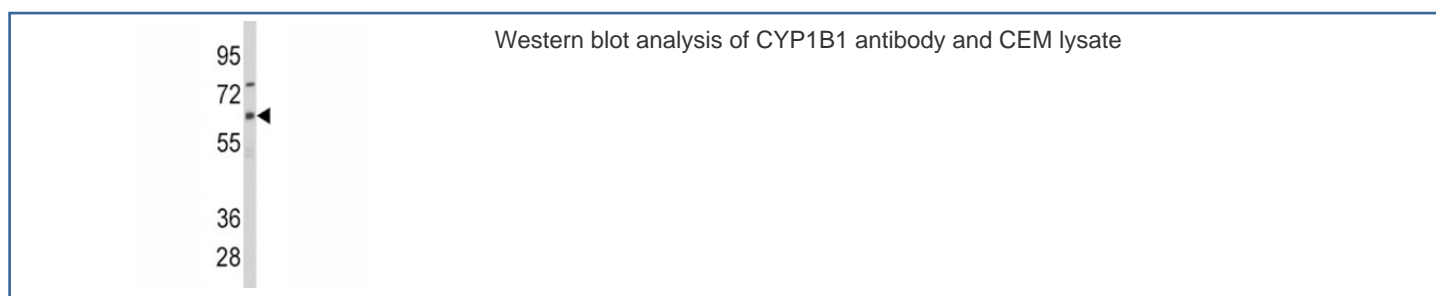


CYP1B1 Antibody (F50866)

Catalog No.	Formulation	Size
F50866-0.4ML	In 1X PBS, pH 7.4, with 0.09% sodium azide	0.4 ml
F50866-0.08ML	In 1X PBS, pH 7.4, with 0.09% sodium azide	0.08 ml

[Bulk quote request](#)

Availability	1-3 business days
Species Reactivity	Human
Format	Purified
Host	Rabbit
Clonality	Polyclonal (rabbit origin)
Isotype	Rabbit Ig
Purity	Purified
UniProt	Q16678
Applications	Western Blot : 1:1000
Limitations	This CYP1B1 antibody is available for research use only.



Description

CYP1B1 is a member of the cytochrome P450 superfamily of enzymes. The cytochrome P450 proteins are monooxygenases which catalyze many reactions involved in drug metabolism and synthesis of cholesterol, steroids and other lipids. The enzyme localizes to the endoplasmic reticulum and metabolizes procarcinogens such as polycyclic aromatic hydrocarbons and 17 β -estradiol. Mutations in CYP1B1 gene have been associated with primary congenital glaucoma; therefore it is thought that the enzyme also metabolizes a signaling molecule involved in eye development, possibly a steroid.

Application Notes

Titration of the CYP1B1 antibody may be required due to differences in protocols and secondary/substrate sensitivity.

Immunogen

A portion of amino acids 143-176 from the human protein was used as the immunogen for this CYP1B1 antibody.

Storage

Aliquot the CYP1B1 antibody and store frozen at -20oC or colder. Avoid repeated freeze-thaw cycles.