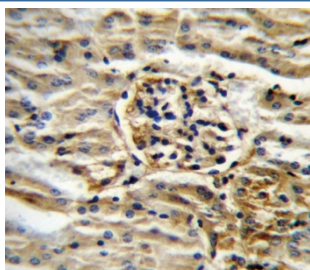


CYP11B2 Antibody (F54582)

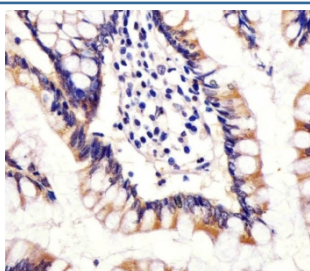
Catalog No.	Formulation	Size
F54582-0.4ML	In 1X PBS, pH 7.4, with 0.09% sodium azide	0.4 ml
F54582-0.08ML	In 1X PBS, pH 7.4, with 0.09% sodium azide	0.08 ml

[Bulk quote request](#)

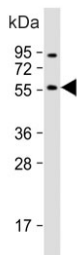
Availability	1-3 business days
Species Reactivity	Human, Mouse
Format	Purified
Clonality	Polyclonal (rabbit origin)
Isotype	Rabbit Ig
Purity	Antigen affinity purified
UniProt	P19099
Localization	Cytoplasmic
Applications	Western Blot : 1:500-1:2000 Flow Cytometry : 1:25 (1x10e6 cells) Immunohistochemistry (FFPE) : 1:25
Limitations	This CYP11B2 antibody is available for research use only.



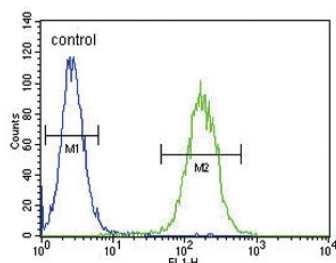
IHC testing of FFPE mouse kidney tissue with CYP11B2 antibody. HIER: steam section in pH6 citrate buffer for 20 min and allow to cool prior to staining.



IHC testing of FFPE human small intestine tissue with CYP11B2 antibody. HIER: steam section in pH6 citrate buffer for 20 min and allow to cool prior to staining.



Western blot testing of human HepG2 cell lysate with CYP11B2 antibody. Predicted molecular weight ~58 kDa.



Flow cytometry testing of human CEM cells with CYP11B2 antibody; Blue=isotype control, Green= CYP11B2 antibody.

Description

This gene encodes a member of the cytochrome P450 superfamily of enzymes. The cytochrome P450 proteins are monooxygenases which catalyze many reactions involved in drug metabolism and synthesis of cholesterol, steroids and other lipids. This protein localizes to the mitochondrial inner membrane. The enzyme has steroid 18-hydroxylase activity to synthesize aldosterone and 18-oxocortisol as well as steroid 11 beta-hydroxylase activity. Mutations in this gene cause corticosterone methyl oxidase deficiency.

Application Notes

The stated application concentrations are suggested starting points. Titration of the CYP11B2 antibody may be required due to differences in protocols and secondary/substrate sensitivity.

Immunogen

A portion of amino acids 120-147 from the human protein was used as the immunogen for the CYP11B2 antibody.

Storage

Aliquot the CYP11B2 antibody and store frozen at -20oC or colder. Avoid repeated freeze-thaw cycles.