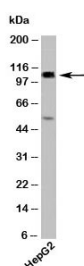


CYLD Antibody (N1164)

| Catalog No. | Formulation | Size |
|-------------|---|--------|
| N1164-100UG | 0.5 mg/ml in 1X PBS with 0.1 mg/ml BSA (US sourced), 0.05% sodium azide | 100 ug |
| N1164-25UG | 0.5 mg/ml in 1X PBS with 0.1 mg/ml BSA (US sourced), 0.05% sodium azide | 25 ug |

[Bulk quote request](#)

| | |
|---------------------------|---|
| Species Reactivity | Human, Mouse |
| Format | Purified |
| Clonality | Polyclonal (rabbit origin) |
| Isotype | Rabbit IgG |
| Purity | Protein A affinity chromatography |
| Buffer | 1X PBS, pH 7.4 |
| Gene ID | 1540 |
| Applications | Western Blot : 2-5ug/ml |
| Limitations | This CYLD antibody is available for research use only. |



Western blot testing of human samples with CYLD antibody at 2ug/ml. Predicted molecular weight ~107kDa.

Description

CYLD is involved in multiple physiological processes including immune response, osteoclastogenesis and spermatogenesis. It is a tumor suppressor via its negative regulation of NF-kB activation. CYLD is a deubiquitinase, removing ubiquitin chains from tumor-necrosis factor receptor-associated factor 2 (TRAF2) and thereby preventing its activation of IκB, a regulator of NF-kB. NF-kB remains sequestered in the cytoplasm, unable to translocate to the nucleus and initiate cell survival and oncogenetic signaling.

Application Notes

Provided assay concentrations are suggestions only, CYLD antibody titration may be required for optimal results.

Immunogen

A recombinant protein fragment from the N-terminal region of human CYLD was used as the immunogen for this antibody.

Storage

Aliquot the CYLD antibody and store frozen at -20°C or colder. Avoid repeated freeze-thaw cycles.

Alternate Names

Cylindromatosis, BRSS, CDMT antibody