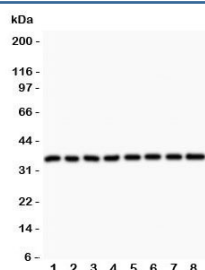


Cyclin D3 Antibody (R31528)

Catalog No.	Formulation	Size
R31528	0.5mg/ml if reconstituted with 0.2ml sterile DI water	100 ug

[Bulk quote request](#)

Availability	1-3 business days
Species Reactivity	Human, Rat
Format	Antigen affinity purified
Host	Rabbit
Clonality	Polyclonal (rabbit origin)
Isotype	Rabbit IgG
Purity	Antigen affinity
Buffer	Lyophilized from 1X PBS with 2.5% BSA and 0.025% sodium azide
UniProt	P30281
Localization	Nuclear
Applications	Western Blot : 0.5-1ug/ml
Limitations	This Cyclin D3 antibody is available for research use only.



Western blot testing of Cyclin D3 antibody and Lane 1: rat testis; 2: (r) thymus; 3: (r) lung; 4: (r) ovary; 5: human Jurkat; 6: (h) A549; 7: (h) MCF-7; 8: (h) HeLa lysate. Predicted molecular weight ~33 kDa.



Western blot testing of Cyclin D3 antibody and recombinant human protein (0.5ng).

Description

Cyclin D3 is a protein that in humans is encoded by the CCND3 gene. It is mapped to 6p21.1. The protein encoded by this gene belongs to a family of proteins whose members are characterized by a dramatic periodicity in protein abundance through the cell cycle. Cyclins function as regulators of CDK kinases. Different cyclins exhibit distinct expression and degradation patterns which contribute to the temporal coordination of each mitotic event. Cyclin D3 forms a complex with and functions as a regulatory subunit of CDK4 or CDK6, whose activity is required for cell cycle G1/S transition. In addition, overexpression of CCND3 upregulated the translational activity in HeLa cells in a dose-dependent manner.

Application Notes

The stated application concentrations are suggested starting amounts. Titration of the Cyclin D3 antibody may be required due to differences in protocols and secondary/substrate sensitivity.

Immunogen

Human partial recombinant protein (AA 136-292) was used as the immunogen for this Cyclin D3 antibody.

Storage

After reconstitution, the Cyclin D3 antibody can be stored for up to one month at 4°C. For long-term, aliquot and store at -20°C. Avoid repeated freezing and thawing.