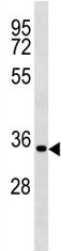


Cyclin D2 Antibody (CCND2) (F52196)

Catalog No.	Formulation	Size
F52196-0.4ML	In 1X PBS, pH 7.4, with 0.09% sodium azide	0.4 ml
F52196-0.08ML	In 1X PBS, pH 7.4, with 0.09% sodium azide	0.08 ml

[Bulk quote request](#)

Availability	1-3 business days
Species Reactivity	Human
Predicted Reactivity	Bovine, Pig
Format	Antigen affinity purified
Clonality	Polyclonal (rabbit origin)
Isotype	Rabbit Ig
Purity	Antigen affinity
UniProt	P30279
Applications	Western Blot : 1:1000
Limitations	This Cyclin D2 antibody is available for research use only.



Cyclin D2 antibody western blot analysis in MDA-MB231 lysate. Predicted molecular weight ~33 kDa.

Description

Regulatory component of the cyclin D2-CDK4 (DC) complex that phosphorylates and inhibits members of the retinoblastoma (RB) protein family including RB1 and regulates the cell-cycle during G(1)/S transition. Phosphorylation of RB1 allows dissociation of the transcription factor E2F from the RB/E2F complex and the subsequent transcription of E2F target genes which are responsible for the progression through the G(1) phase. Hypophosphorylates RB1 in early G(1) phase. Cyclin D-CDK4 complexes are major integrators of various mitogenic and antimitogenic signals. Also substrate for SMAD3, phosphorylating SMAD3 in a cell-cycle-dependent manner and repressing its transcriptional activity. Component of the ternary complex, cyclin D2/CDK4/CDKN1B, required for nuclear translocation and activity of the cyclin

D-CDK4 complex (By similarity).

Application Notes

Titration of the Cyclin D2 antibody may be required due to differences in protocols and secondary/substrate sensitivity.

Immunogen

A portion of amino acids 258-285 from the human protein was used as the immunogen for this Cyclin D2 antibody.

Storage

Aliquot the Cyclin D2 antibody and store frozen at -20oC or colder. Avoid repeated freeze-thaw cycles.