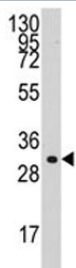


Cyclin C Antibody (CCNC) (F50809)

Catalog No.	Formulation	Size
F50809-0.4ML	In 1X PBS, pH 7.4, with 0.09% sodium azide	0.4 ml
F50809-0.08ML	In 1X PBS, pH 7.4, with 0.09% sodium azide	0.08 ml

[Bulk quote request](#)

Availability	1-3 business days
Species Reactivity	Human
Predicted Reactivity	Bovine, Chicken, Mouse, Rat, Xenopus
Format	Purified
Clonality	Polyclonal (rabbit origin)
Isotype	Rabbit Ig
Purity	Purified
UniProt	P24863
Applications	Western Blot : 1:1000
Limitations	This Cyclin C antibody is available for research use only.



Western blot analysis of Cyclin C antibody and HL-60 lysate. Predicted molecular weight: 33-37 kDa

Description

CCNC is a member of the cyclin family of proteins. This protein interacts with cyclin-dependent kinase 8 and induces the phosphorylation of the carboxy-terminal domain of the large subunit of RNA polymerase II.

Application Notes

Titration of the Cyclin C antibody may be required due to differences in protocols and secondary/substrate sensitivity.

Immunogen

A portion of amino acids 221-249 from the human protein was used as the immunogen for this Cyclin C antibody.

Storage

Aliquot the Cyclin C antibody and store frozen at -20oC or colder. Avoid repeated freeze-thaw cycles.