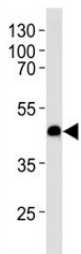


CXCR7 Antibody (F51343)

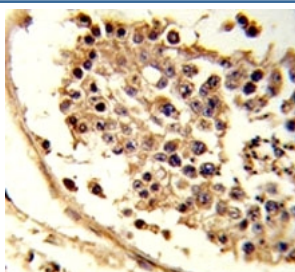
| Catalog No. | Formulation | Size |
|---------------|--|---------|
| F51343-0.4ML | In 1X PBS, pH 7.4, with 0.09% sodium azide | 0.4 ml |
| F51343-0.08ML | In 1X PBS, pH 7.4, with 0.09% sodium azide | 0.08 ml |

[Bulk quote request](#)

| | |
|-----------------------------|---|
| Availability | 1-3 business days |
| Species Reactivity | Human |
| Predicted Reactivity | Mouse, Rat |
| Format | Antigen affinity purified |
| Host | Rabbit |
| Clonality | Polyclonal (rabbit origin) |
| Isotype | Rabbit Ig |
| Purity | Antigen affinity |
| UniProt | P25106 |
| Applications | Western Blot : 1:1000 IHC (Paraffin) : 1:50-1:100 |
| Limitations | This CXCR7 antibody is available for research use only. |



Western blot analysis of lysate from U-251 MG cell line using CXCR7 antibody at 1:1000 for each lane. Predicted molecular weight ~43 kDa.



IHC analysis of FFPE human testis tissue stained with CXCR7 antibody

Description

CXCR7 is a member of the G-protein coupled receptor family. Although this protein was earlier thought to be a receptor for vasoactive intestinal peptide (VIP), it is now considered to be an orphan receptor, in that its endogenous ligand has not been identified. The protein is also a coreceptor for human immunodeficiency viruses (HIV).

Application Notes

Titration of the CXCR7 antibody may be required due to differences in protocols and secondary/substrate sensitivity.

Immunogen

A portion of amino acids 330-358 from the human protein was used as the immunogen for this CXCR7 antibody.

Storage

Aliquot the CXCR7 antibody and store frozen at -20oC or colder. Avoid repeated freeze-thaw cycles.