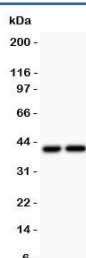


CXCR3 Antibody (R31506)

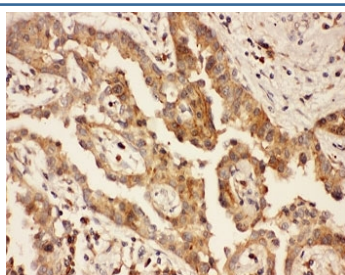
Catalog No.	Formulation	Size
R31506	0.5mg/ml if reconstituted with 0.2ml sterile DI water	100 ug

Bulk quote request

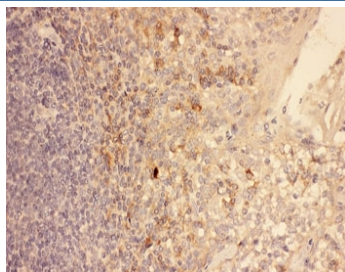
Availability	1-3 business days
Species Reactivity	Human, Rat
Format	Antigen affinity purified
Host	Rabbit
Clonality	Polyclonal (rabbit origin)
Isotype	Rabbit IgG
Purity	Antigen affinity
Buffer	Lyophilized from 1X PBS with 2.5% BSA and 0.025% sodium azide
Gene ID	2833
Applications	Western Blot : 0.5-1ug/ml IHC (FFPE) : 0.5-1ug/ml
Limitations	This CXCR3 antibody is available for research use only.



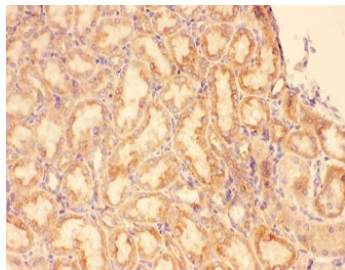
Western blot testing of CXCR3 antibody and Lane 1: COLO320; 2: SGC lysate.
Predicted molecular weight ~41 kDa.



IHC-P: CXCR3 antibody testing of human lung cancer tissue



IHC-P: CXCR3 antibody testing of human tonsil tissue



IHC-P: CXCR3 antibody testing of rat kidney tissue

Description

CXCR3 is a Gα_i protein-coupled receptor in the CXC chemokine receptor family. Other names for CXCR3 are G protein-coupled receptor 9 (GPR9) and CD183. CXCR3 is expressed on malignant B cells from chronic lymphoproliferative disorders, particularly in patients with CLL, and represents a fully functional receptor involved in chemotaxis of malignant B lymphocytes. It is found that in the absence of known etiologic agents, CXCR3 represents a novel target for therapeutic interference early in type 1 diabetes. Signaling is associated with MG pathogenesis and CXCR3 may serve as novel drug targets to treat MG. CXCR3A and CXCR3B are involved in the chemotactic and vascular effects of CXCL4L1.

Application Notes

The stated application concentrations are suggested starting amounts. Titration of the CXCR3 antibody may be required due to differences in protocols and secondary/substrate sensitivity.

Immunogen

Human partial recombinant protein (AA 1-368) was used as the immunogen for this CXCR3 antibody.

Storage

After reconstitution, the CXCR3 antibody can be stored for up to one month at 4°C. For long-term, aliquot and store at -20°C. Avoid repeated freezing and thawing.