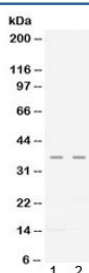


CXCL16 Antibody (R32522)

Catalog No.	Formulation	Size
R32522	0.5mg/ml if reconstituted with 0.2ml sterile DI water	100 ug

Bulk quote request

Availability	1-3 business days
Species Reactivity	Human
Format	Antigen affinity purified
Host	Rabbit
Clonality	Polyclonal (rabbit origin)
Isotype	Rabbit IgG
Purity	Antigen affinity
Buffer	Lyophilized from 1X PBS with 2.5% BSA and 0.025% sodium azide
UniProt	Q9H2A7
Applications	Western Blot : 0.5-2ug/ml ELISA : 0.5-1ug/ml (human protein tested); request BSA-free format for coating
Limitations	This CXCL16 antibody is available for research use only.



Western blot testing of human 1) CEM and 2) A549 lysate with CXCL16 antibody at 0.5ug/ml. Predicted molecular weight ~29 kDa, glycosylated form ~60 kDa, cleaved glycosylated form ~35 kDa.

Description

Chemokine (C-X-C motif) ligand 16 is a small cytokine belonging to the CXC chemokine family. Chemotaxis assays found that CXCL16 induced a strong chemotactic response in activated CD8 T cells.

Application Notes

Differences in protocols and secondary/substrate sensitivity may require the CXCL16 antibody to be titrated for optimal

performance.

Immunogen

Amino acids N30-A196 from the human protein were used as the immunogen for the CXCL16 antibody.

Storage

After reconstitution, the CXCL16 antibody can be stored for up to one month at 4oC. For long-term, aliquot and store at -20oC. Avoid repeated freezing and thawing.