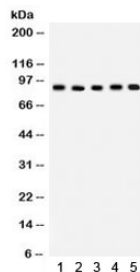


Cullin 1 Antibody / CUL1 (R32221)

Catalog No.	Formulation	Size
R32221	0.5mg/ml if reconstituted with 0.2ml sterile DI water	100 ug

[Bulk quote request](#)

Availability	1-3 business days
Species Reactivity	Human, Mouse, Rat
Format	Antigen affinity purified
Host	Rabbit
Clonality	Polyclonal (rabbit origin)
Isotype	Rabbit IgG
Purity	Antigen affinity
Buffer	Lyophilized from 1X PBS with 2.5% BSA and 0.025% sodium azide
UniProt	Q13616
Localization	Nuclear, cytoplasmic
Applications	Western Blot : 0.1-0.5ug/ml
Limitations	This Cullin 1 antibody is available for research use only.



Western blot testing of 1) rat spleen, 2) rat lung, 3) rat thymus, 4) mouse lung, 5) human SW620 lysate with Cullin 1 antibody. Predicted/observed molecular weight ~90 kDa.

Description

Cullin 1, also known as CUL1, is a human protein and gene from cullin family. This protein plays an important role in protein degradation and protein ubiquitination. This is an essential component of the SCF (SKP1-CUL1-F-box protein) E3 ubiquitin ligase complex, which mediates the ubiquitination of proteins involved in cell cycle progression, signal transduction and transcription. Human cullin 1, but not the other closely related cullins 2, 3, 4A, and 5, selectively interacts with human SKP1.

Application Notes

Optimal dilution of the Cullin 1 antibody should be determined by the researcher.

Immunogen

Amino acids 457-770 of human Cullin 1 were used as the immunogen for the Cullin 1 antibody.

Storage

After reconstitution, the Cullin 1 antibody can be stored for up to one month at 4oC. For long-term, aliquot and store at -20oC. Avoid repeated freezing and thawing.