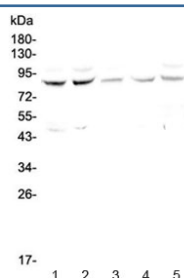


CUL4A Antibody (RQ4317)

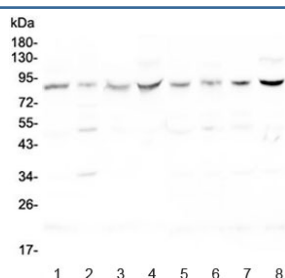
Catalog No.	Formulation	Size
RQ4317	0.5mg/ml if reconstituted with 0.2ml sterile DI water	100 ug

Bulk quote request

Availability	1-3 business days
Species Reactivity	Human, Mouse, Rat
Format	Antigen affinity purified
Host	Rabbit
Clonality	Polyclonal (rabbit origin)
Isotype	Rabbit IgG
Purity	Antigen affinity purified
Buffer	Lyophilized from 1X PBS with 2% Trehalose and 0.025% sodium azide
UniProt	Q13619
Applications	Western Blot : 0.5-1ug/ml Direct ELISA : 0.1-0.5ug/ml
Limitations	This CUL4A antibody is available for research use only.



Western blot testing of human 1) HeLa, 2) COLO-320, 3) MDA-MB-231, 4) Jurkat and 5) PANC-1 cell lysate with CUL4A antibody at 0.5ug/ml. Predicted molecular weight ~88 kDa.



Western blot testing of rat 1) brain, 2) spleen, 3) heart, 4) testis and mouse 5) brain, 6) spleen, 7) heart and 8) testis lysate with CUL4A antibody at 0.5ug/ml. Predicted molecular weight ~88 kDa.

Description

Cullin-4A is a protein that in humans is encoded by the CUL4A gene. It belongs to the cullin family of ubiquitin ligase proteins and is highly homologous to the CUL4B protein. CUL4A regulates numerous key processes such as DNA repair, chromatin remodeling, spermatogenesis, haematopoiesis and the mitotic cell cycle. As a result, CUL4A has been implicated in several cancers and the pathogenesis of certain viruses including HIV. Interestingly, a component of a CUL4A complex, Cereblon, was discovered to be a major target of the teratogenic agent thalidomide.

Application Notes

Optimal dilution of the CUL4A antibody should be determined by the researcher.

Immunogen

A recombinant human protein corresponding to amino acids M494-A759 was used as the immunogen for the CUL4A antibody.

Storage

After reconstitution, the CUL4A antibody can be stored for up to one month at 4°C. For long-term, aliquot and store at -20°C. Avoid repeated freezing and thawing.