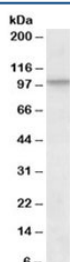


## CUL2 Antibody (R35520)

Catalog No.	Formulation	Size
R35520-100UG	0.5 mg/ml in 1X TBS, pH7.3, with 0.5% BSA (US sourced) and 0.02% sodium azide	100 ug

[Bulk quote request](#)

Availability	1-3 business days
Species Reactivity	Human, Mouse
Predicted Reactivity	Rat, Dog, Cow
Format	Antigen affinity purified
Clonality	Polyclonal (goat origin)
Isotype	Goat Ig
Purity	Antigen affinity
Gene ID	8453
Applications	Western Blot : 1-3ug/ml ELISA (peptide) LOD : 1:8000
Limitations	This CUL2 antibody is available for research use only.



Western blot testing of NIH3T3 lysate with CUL2 antibody at 1ug/ml. Predicted molecular weight: ~87 kDa, observed here at ~100 kDa.

## Description

Additional name(s) for this target protein: Cullin 2

## Application Notes

Optimal dilution of the CUL2 antibody should be determined by the researcher.

## Immunogen

Amino acids QYIERSQASADE were used as the immunogen for this CUL2 antibody.

## **Storage**

Aliquot and store the CUL2 antibody at -20oC.